

The View at Highland Park

Durham, NC | Priced: From the mid \$600's

\$20,000 credit w preferred lender

HOMESITE 58

2004 Upland Lane
Durham, NC 27712

4 Bed | 2 Bath | 1 Half Bath

2767 Square Feet

2 Car Garage

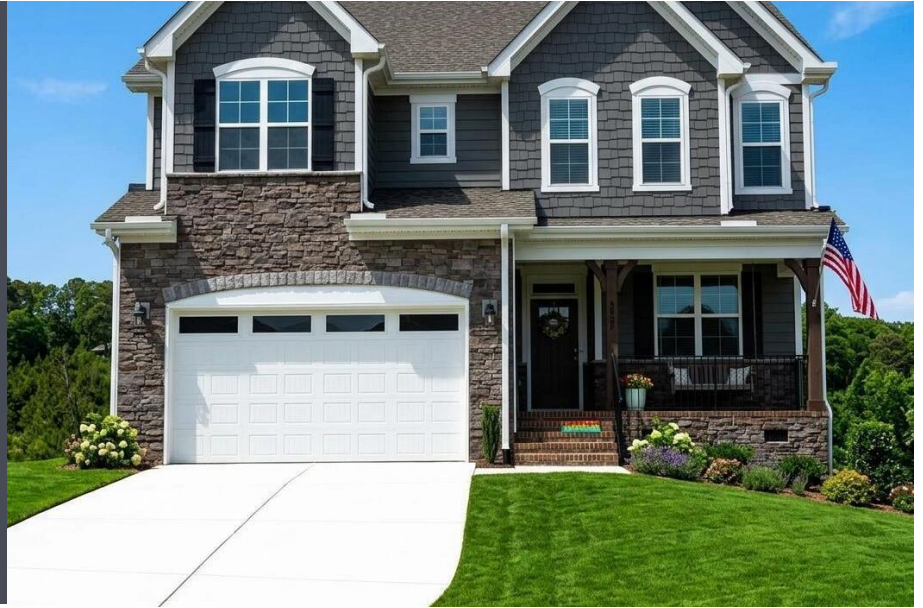
Plan: Watauga European

MLS: 10136270

Built by: McKee Homes

\$649,000 / AVAILABLE

Buyer's Agent: 2.5%



HOME DESCRIPTION

The Watauga European offers a smart, easy-flow layout where the kitchen, dining and living areas connect naturally for both everyday routines and relaxed gatherings. The kitchen features upgraded quartz counters, a KitchenAid range, microwave and dishwasher, plus wood-shelved pantry storage. A 50-inch electric fireplace with a shiplap accent wall anchors the living room with understated character. A separate flex finishes the first floor. Upstairs, the private bedroom suite includes its own bath with a tile shower and a generous closet, while three additional bedrooms provide adaptable space for work, guests or hobbies. The loft gives even more breathing room and space. The laundry room adds practicality with ample cabinetry, a countertop and a sink! A covered back porch expands your living area outdoors, offering a comfortable spot to unwind or host friends, with breathtaking views! The Watauga floor plan is designed to support a variety of lifestyles with ease and intention. (Some photos are of a different home and do not represent the specific interior of this home.) [The View] [Watauga]

CONTACT COMMUNITY

Sales Associate: Molly Williams
(336) 214-1986 | MWilliams@McKeeHomesnc.com
www.mckeehomesnc.com

Prices, promotions, specifications and community information are subject to change without notice. 06/2026

FMB
FONVILLE MORISEY BAREFOOT 