

Laurel Ridge

Pittsboro, NC | Priced: From \$1.5 Million +

Custom Estate Residences

HOMESITE 15

175 Clear Springs Court
Pittsboro, NC 27312

3 Bed | 3 Bath | 1 Half Bath

3334 Square Feet

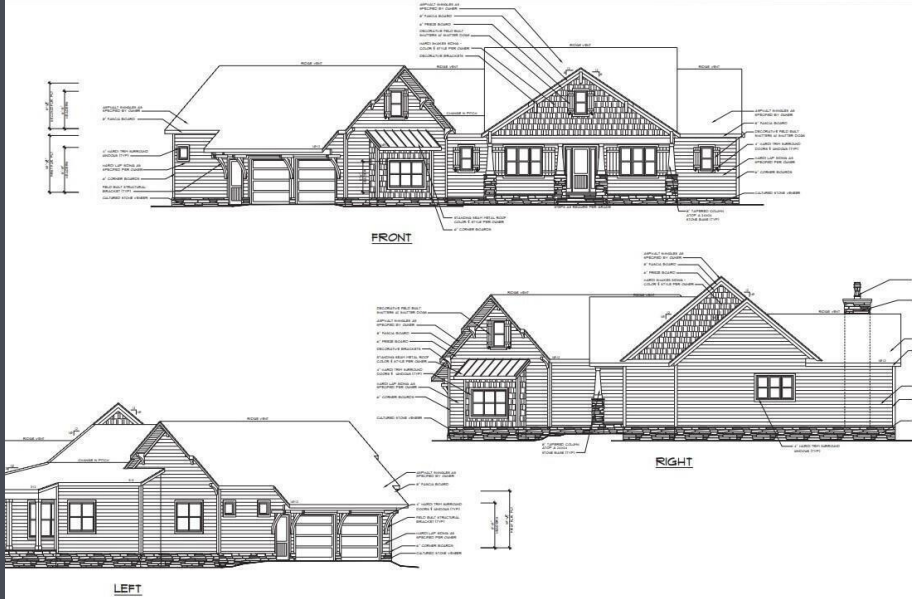
3 Car Garage

1st Floor Owner Suite

MLS: 10067009

Built by: Dunning Custom Homes

\$1,900,000 / AVAILABLE



HOME DESCRIPTION

Owner designed custom built ranch with detached workshop in picturesque Laurel Ridge finely crafted by award winning Dunning Custom Homes. Located just 5 minutes from Chapel Ridge Golf Club and 10 minutes from booming Chatham Park, you get the best of both worlds at Laurel Ridge: scenic living near the Haw River & Jordan Lake w retail & entertainment at Mosaic just minutes away. Large acreage w NO WELL or SEPTIC NEEDED!

CONTACT COMMUNITY

Sales Associate: Kerrie Bornkessel
(919) 926-5502 | laurelridge@fmbnewhomes.com
www.DiscoverLaurelRidge.com

Prices, promotions, specifications and community information are subject to change without notice. 09/2025

FMB
FONVILLE MORISEY BAREFOOT 