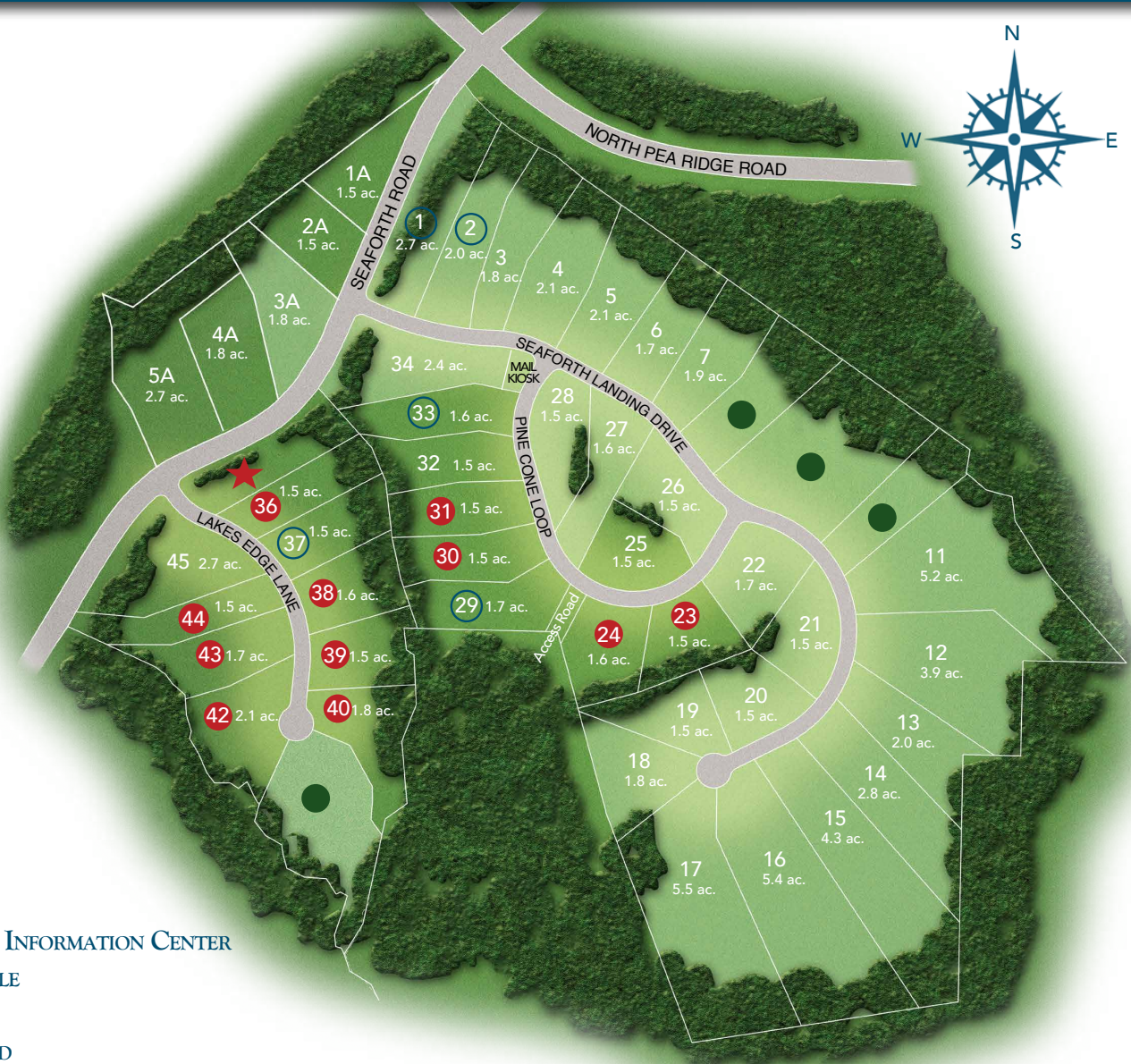




COMMUNITY MAP



LEGEND

- ★ SALES & INFORMATION CENTER
- AVAILABLE
- SOLD
- RESERVED
- NOT AVAILABLE

Directions from Raleigh, Cary & Apex-

From I-540 and 64W go approximately 9 miles on 64W and cross over Jordan Lake and turn Left on Seaforth Rd. Cross N Pea Ridge Rd and the sales office is located on the left.

Directions from Chapel Hill/Pittsboro-

From US15/501 S take 64E approximately 6 miles and turn Right on North Pea Ridge Rd. Follow 2 miles and make a Right on Seaforth Rd. Sales office is located on the left.

Evelyn John, Sales Associate
 919.926.5504 • SeaforthLanding@FMBnewhomes.com
 39 Lakes Edge Lane Pittsboro, NC 27312

www.SeaforthLandingNC.com

