

THE FARM AT NEILL'S CREEK



**If you love the beauty of nature all around you,
look no further for a location to build your dream home.**

Are you ready to experience the perfect blend of small-town charm and modern living? Look no further than our newest community, The Farm at Neill's Creek in Lillington, NC! Nestled in the heart of Harnett County, Lillington is the ideal location for those seeking a peaceful community with easy access to the Triangle and surrounding areas. What sets Lillington apart is its locally-owned shops and restaurants in the bustling downtown area. And let's not forget the gorgeous Cape Fear River and numerous parks and recreation options for nature lovers. Come see for yourself why The Farm at Neill's Creek is the place to call home!



Welcome Home!
cheshomes.com

The Hickory

Model: 1944

Beds 3 | Baths 2.5

Square Feet 1,932



FIRST FLOOR



SECOND FLOOR

The Holly

Model: 2343

Beds 4 | Baths 2.5 - 3

Square Feet 2,343



FIRST FLOOR



SECOND FLOOR

The Shorebreak

Model: 307

Beds 3 - 4 | Baths 2 - 3

Square Feet 1,938 - 2,770



FIRST FLOOR



OPTIONAL
SECOND FLOOR

The Symphony

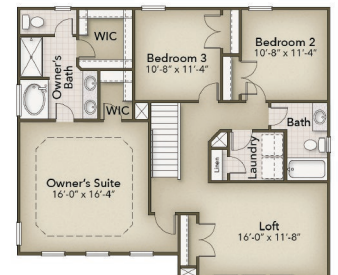
Model: 62100

Beds 3 - 4 | Baths 2.5

Square Feet 2,174 - 2,306



FIRST FLOOR



SECOND FLOOR

Offering a perfectly crafted mix of our tried and true floorplans, come find a house that you can make your home. Whether you are searching for a first-floor Owner's Suite or looking for that additional square footage to grow into, your new home awaits you at The Farm at Neill's Creek.

The Concerto

Model: 6260

Beds 4 - 5 | Baths 2.5 - 3

Square Feet 2666 - 2808



The Azalea

Model: 628

Beds 5 | Baths 3.5 - 4.5

Square Feet 3016 - 3154



The Poppy

Model: 755

Beds 5 | Baths 3

Square Feet 2427 - 2437



The Redbud

Model: 750

Beds 3 - 4 | Baths 2

Square Feet 1847



Choose your perfect floorplan and homesite today, and be amongst those who call The Farm At Neill's Creek home!

THE FARM AT NEILL'S CREEK



Chesapeake Homes' Homesites



Welcome Home!
cheshomes.com



© Chesapeake Homes. All Rights Reserved. Builder reserves the right to change prices, plans, components and specifications and to withdraw or modify any plan without notice. Extra costs, options, and decorator items may be shown in model or in illustrations. Individual homes may vary from the models, or from each other, depending on field conditions. Builder, developer, or seller reserve the right to change any specifications and details without notice. Information contained herein is subject to change without notice. No responsibility is accepted by the builder, developer, or seller for any action taken in reliance thereon. Prospective purchasers should make their own inquiries to satisfy themselves on all aspects. Details herein do not constitute any representation by the developer and are expressly excluded from any contract. Images are artist's impression and for illustrative purposes only.