

1401 Sky Vista Way Homesite 27
Raleigh Custom Homes
\$2,249,900



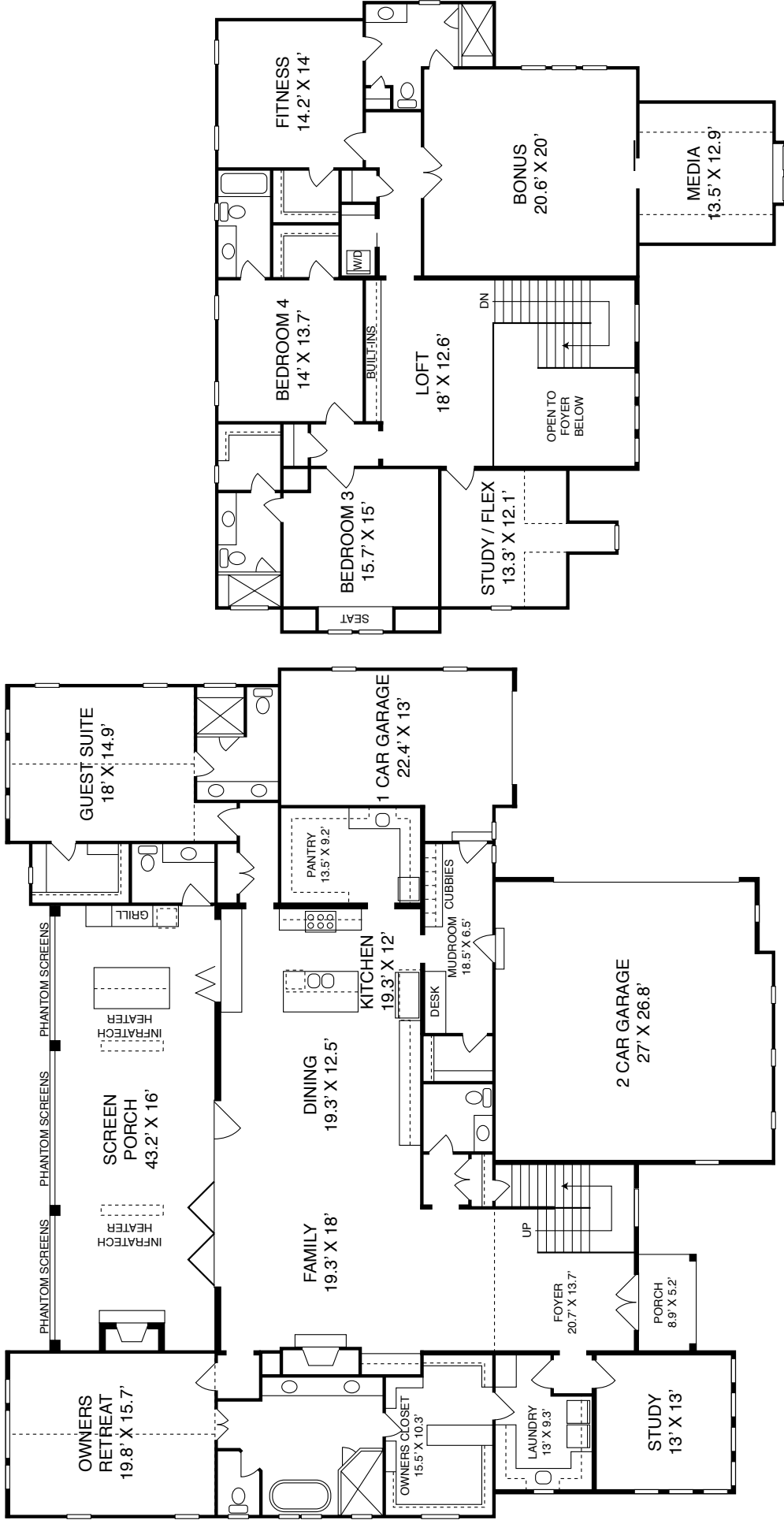
5,514 SF Finished
4 Bedrooms / 5 Full Baths / 1 Half Bath
First Floor Owners Retreat
Main Level Guest Suite Plus Study
Designer Kitchen with Abundant Custom Cabinets
Large Prep Kitchen/Pantry
Spacious Rear Porch with Phantom Screens, Fireplace, and Infratech Heaters
3 Car Garage

Exterior:

- Captivating brick and siding home with remarkable architectural details
- Windows surround all sides for natural light
- Rear porch with Phantom screens, fireplace and outdoor kitchen with grill
- Nestled on 1.02 Acre homesite

Interior:

- Inviting double door front covered entry
- Dramatic 2 story foyer opens to large lofty overlook with custom built-ins
- Spacious first floor owners retreat with vaulted ceiling has huge walk-in closet and spa inspired bath with relaxing soaking tub and large walk-in shower
- Private first floor guest suite with en suite bath and WIC
- Main level study has cascading light from floor to ceiling windows
- Chef's dream kitchen has designer appliances, abundant custom cabinetry and huge island
- Enjoy the best combination – a prep kitchen and a huge pantry!
- The kitchen opens to the dining area and family room with fireplace – all flow through glass folding doors to the screened porch with Infratech heaters – enjoy indoor and outdoor living throughout the year!
- Wonderful mudroom with desk, lots of cubbies and WIC
- Each spacious bedroom has a large WIC and en suite bath
- Huge bonus/game room, media room and fitness room!



Raleigh Custom Homes Southern Hills Estates Homesite #27

The builder reserves the right to revise noted specifications or substitute features, architectural details or materials. Illustrations and floorplans are for discussion purposes only and not part of a legal contract. Room sizes are approximate. 10-1-21