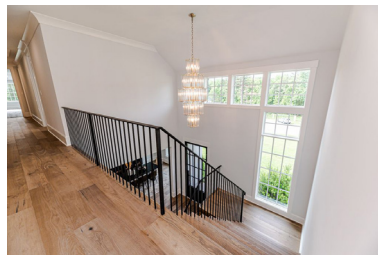




**1604 Estate Valley Lane | Homesite 13**

**Raleigh Custom Homes**

**\$2,649,900**



**5,802 SF Finished**

**4 Bedrooms / 5 Full Baths / 2 Half Baths**

**First Floor Owners Retreat, Guest Suite & Study!**

**Chef's Kitchen with Wolf & Sub-Zero**

**Large Prep Kitchen/Pantry**

**Spacious Rear Porch with Phantom Screens, Fireplace, Infratech Heaters, Grilling Area, and Half Bath**

**3 Car Garage**

#### **Exterior:**

- Stunning modernist home with stone accents
- Rear porch with private wooded vistas has Phantom screens, fireplace, Infratech heaters, grilling area with island & Coyote grill, plus half bath
- Nestled on large 1.05 Acre homesite

#### **Interior**

- Covered glass door entry opens to impressive two story foyer
- Views from foyer all the way through to rear porch – experience the private lush wooded setting!
- Exquisite first floor owners retreat complimented by huge walk-in closet and spa bath with walk-through shower – no glass! Enjoy access from the bedroom to the rear screened porch for morning coffee!
- Main level study plus private guest suite
- Chef's dream kitchen has Wolf range and Sub-Zero refrigerator, freezer & wine columns!
- Prep kitchen/pantry well-equipped with Bosch appliances
- The kitchen opens to the dining area and family room with fireplace – all flow through glass sliders to the screened porch – enjoy indoor outdoor living!
- Spacious bonus room has entertainment bar
- Each generous bedroom has a large WIC & en suite bath
- Enjoy fitness room, second study/flex room and finished storage

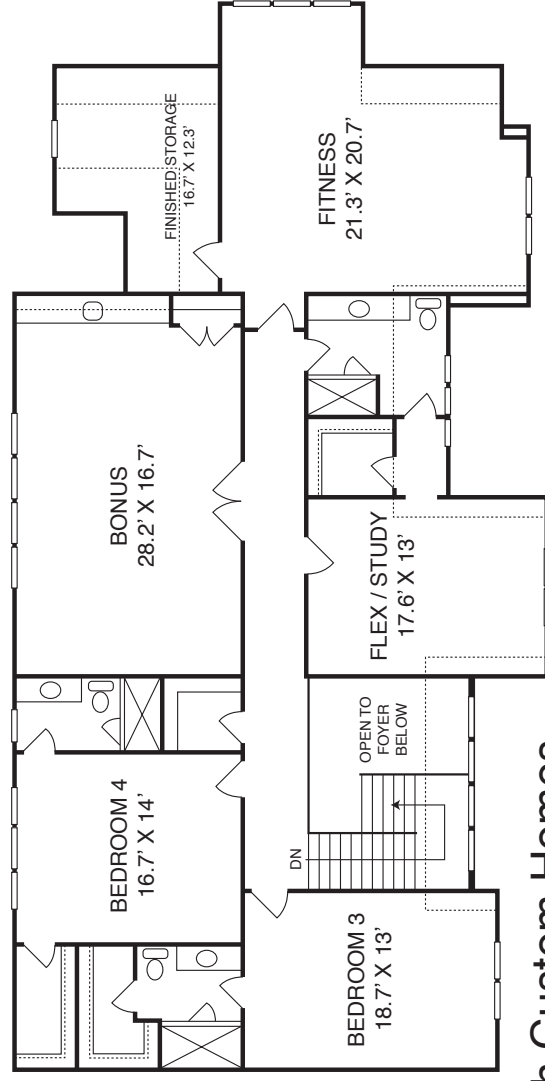
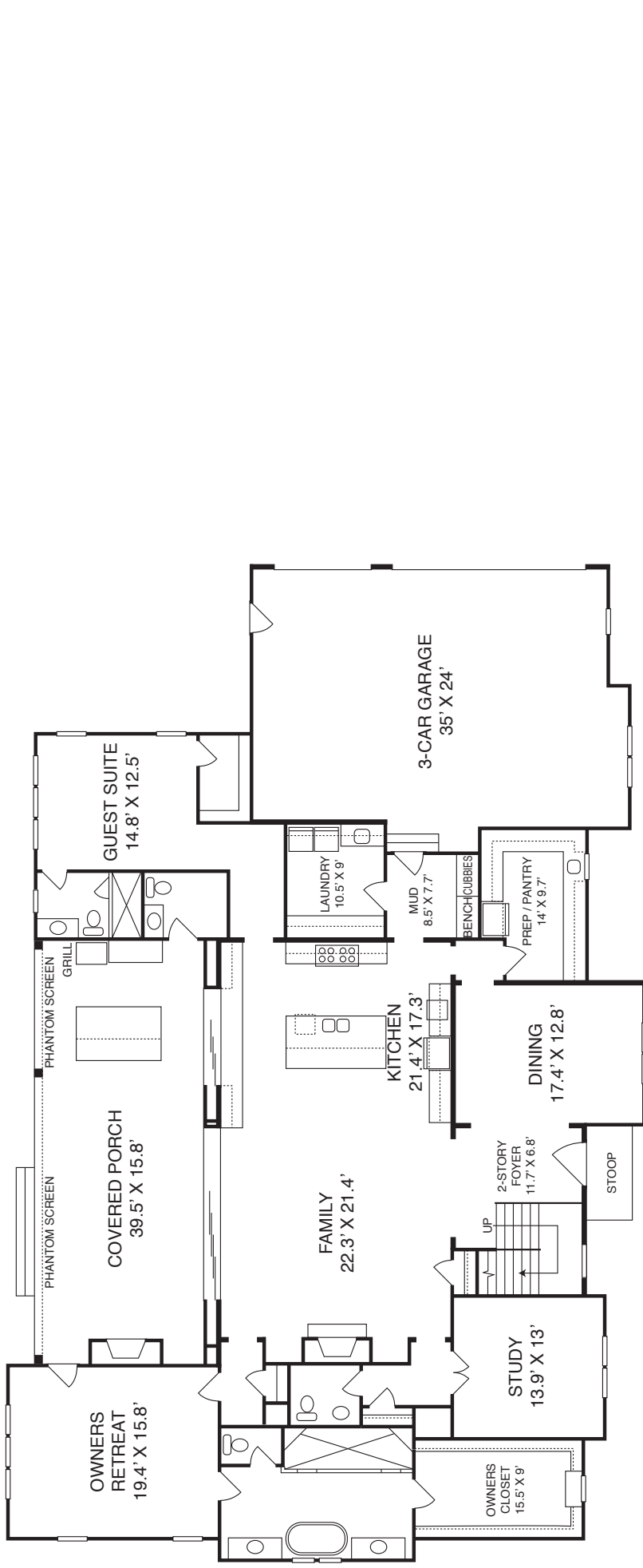


**Southern Hills Estates**

**SouthernHillsEstates.com | 919-926-5510**

**Sales by Fonville Morisey Barefoot**

Prices and specifications subject to change 5/22/23 



## Raleigh Custom Homes

### Southern Hills Estates Homesite #13

The builder reserves the right to revise noted specifications or substitute features, architectural details or materials. Illustrations and floorplans are for discussion purposes only and not part of a legal contract. Room sizes are approximate. 8-30-22