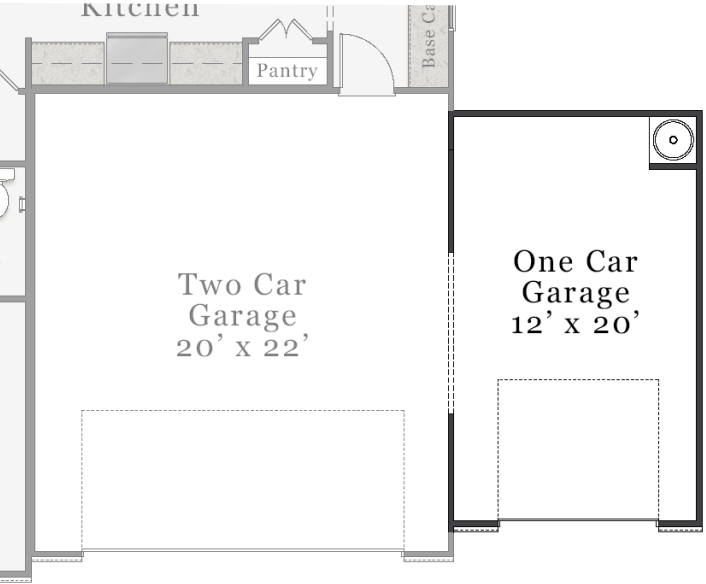


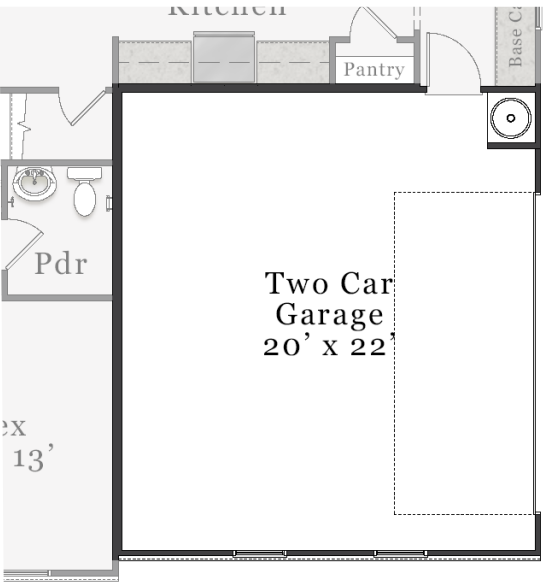
Plan Options

McKee
HOMES

We Build LIFE CHANGING MOMENTS



Opt. Third Bay Garage



Opt. Side Load Garage

The McKimmon

3-4 Bedrooms
2.5-3.5 Baths
2,525-2,533 sq.ft.



Craftsman



Classic



Coastal



European

Plans and elevations are artist's renderings only and used for marketing purposes. Stated dimensions and square footage are approximate and should not be used as representation of the home's precise or actual size. McKee Homes reserves the right to make changes to these floorplans, specifications, dimensions, and elevations without prior notice. We may need to substitute equipment, materials and appliances with items of equal or higher value at our own discretion. Floor plans are the copyright protected property of McKee Homes. ©2025 McKee Homes. All rights reserved.

McKee
HOMES

A Percentage of Every Home Sold Goes to
Support Alzheimer's Research and Care

McKeeHomesNC.com

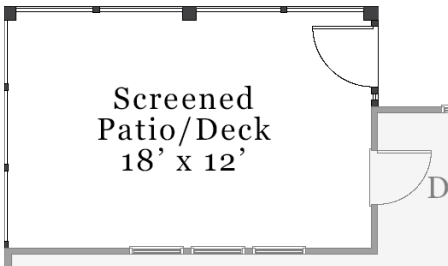
 **JOE MCKEE MEMORIAL
ALZHEIMER'S FUND**
BUILDING A CURE FOR ALZHEIMER'S



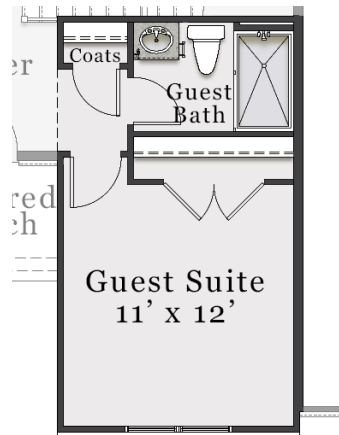
First Floor



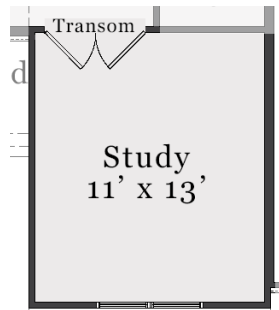
Opt. Covered Patio/Deck



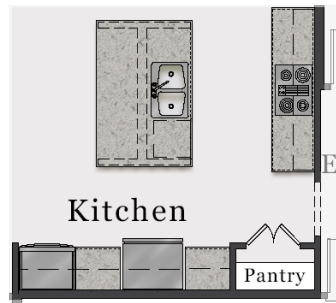
Opt. Screened Patio/Deck



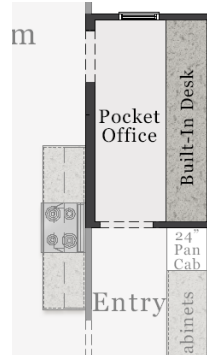
Opt. Guest Suite



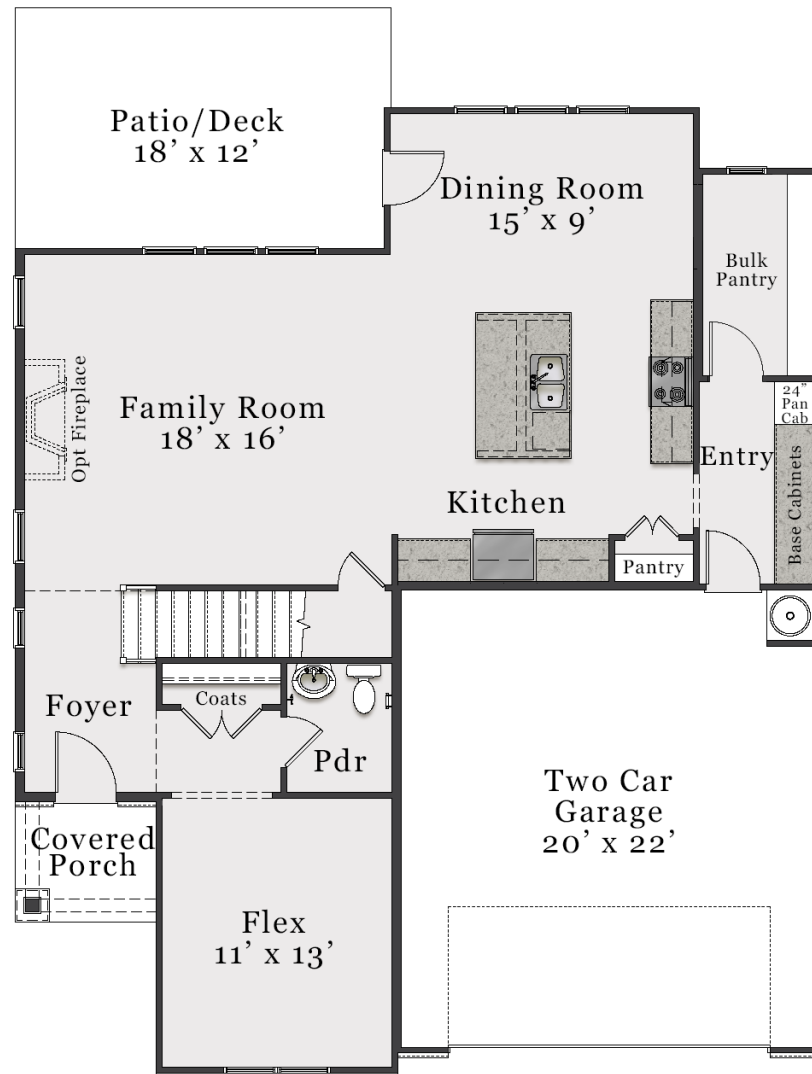
Opt. Study w/French Doors



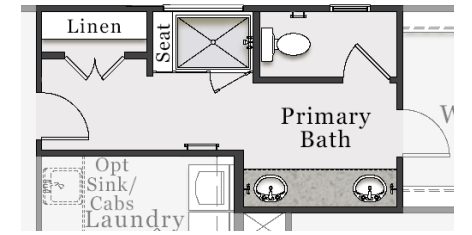
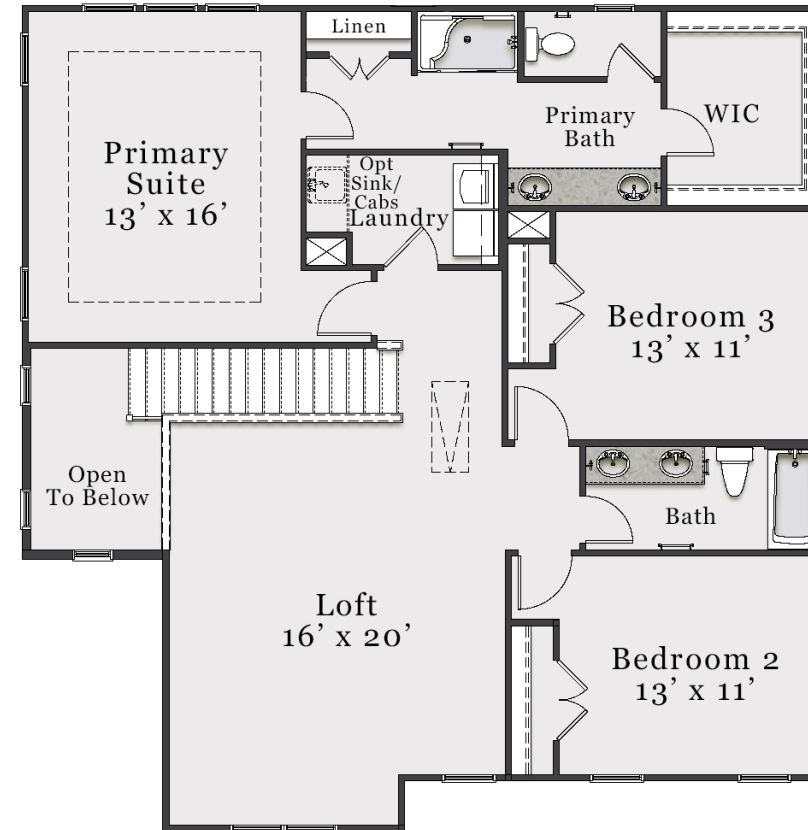
Opt. Deluxe Kitchen



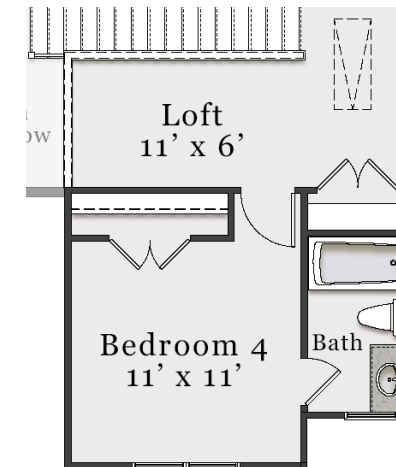
Opt. Pocket Office



Second Floor



Opt. Primary Bath w/Tiled Shower



Opt. Bedroom 4 w/Bath 3 ILO Loft