



THE NELSON II



CRAFTSMAN KS COLLECTION

SQUARE FEET: 2,333 TO 2,906

BEDROOMS: 3 TO 4

BATHROOMS: 2.5



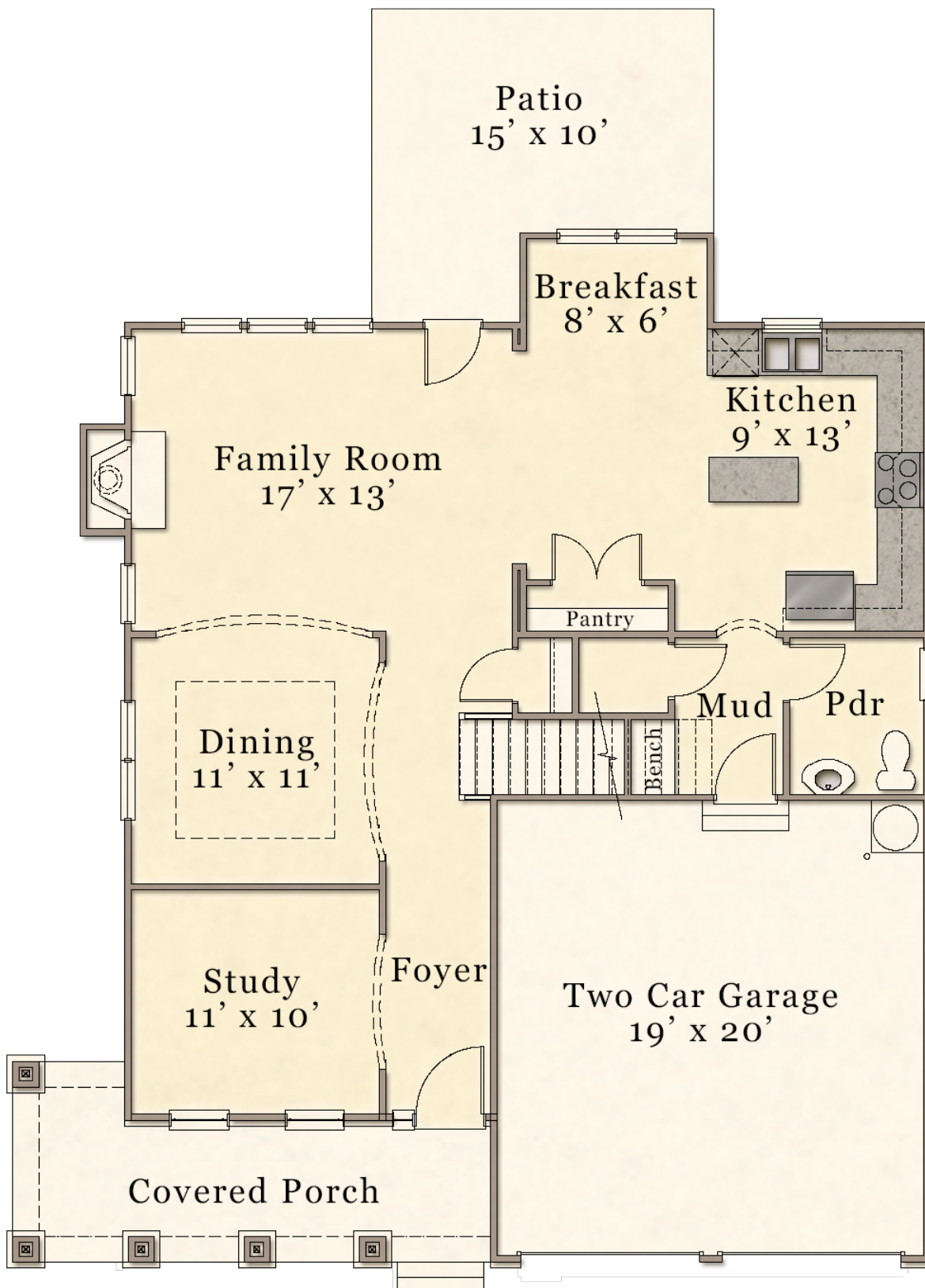
McKee Homes
109 Hay Street, Suite 301 • Fayetteville, NC 28301
Sales: 910-672-7296 • Main Office: 910-475-7100
sales@mckeehomesnc.com • www.McKeeHomesNC.com



Plans and elevations are artist's renderings only and used for marketing purposes. Stated dimensions and square footage are approximate and should not be used as representation of the home's precise or actual size. McKee Homes reserves the right to make changes to these floor plans, specifications, dimensions, designs, features and elevations without prior notice. We may need to substitute equipment, materials and appliances with items of equal or higher value at our own discretion. Floor plans are the copyright protected property of McKee Homes. © 2019 McKee Homes. All rights reserved. v0219-SV2

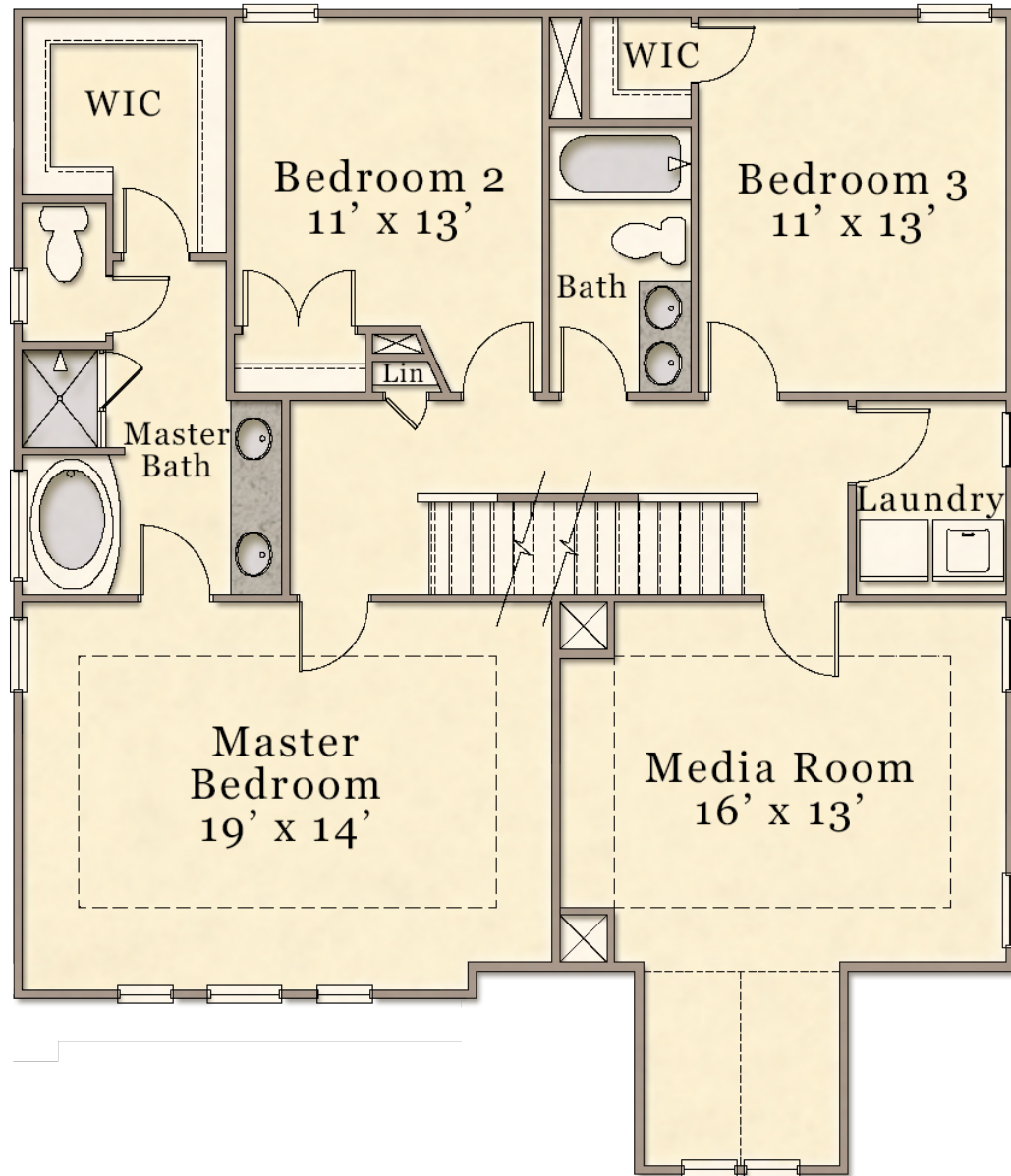
FIRST FLOOR

Approx. 1,052 Sq. Ft.



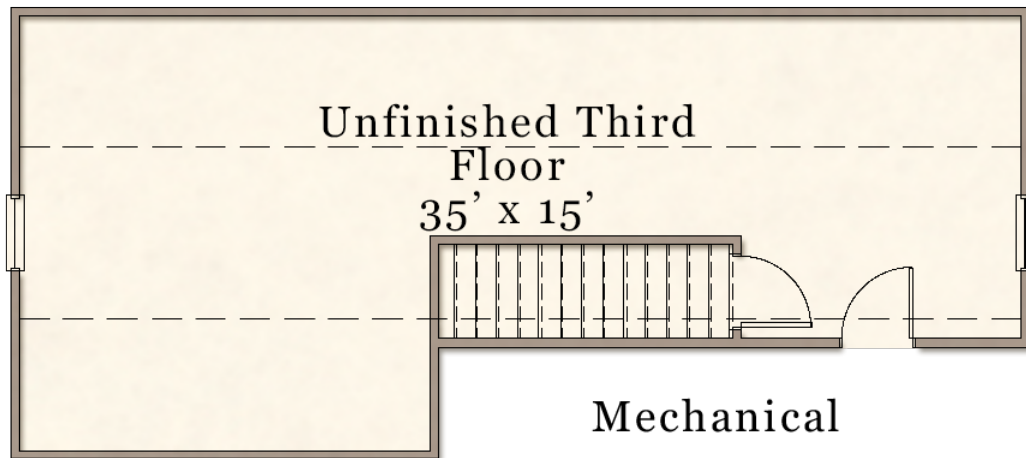
SECOND FLOOR

Approx. 1,281 Sq. Ft.

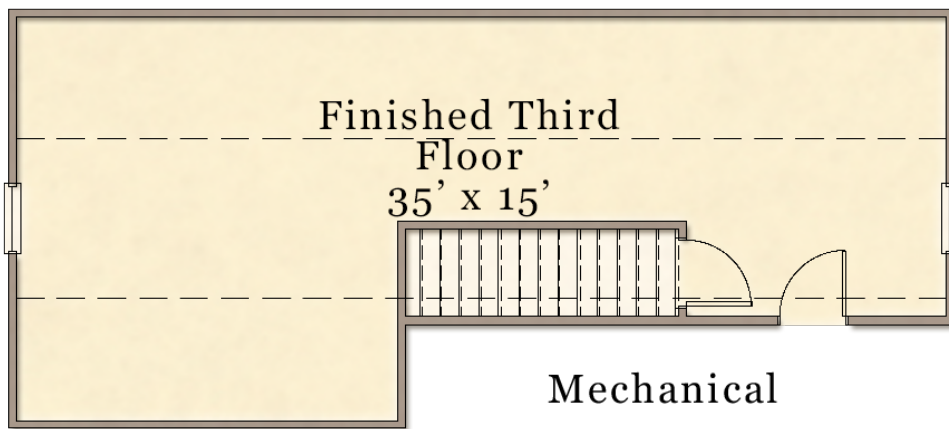


THIRD FLOOR

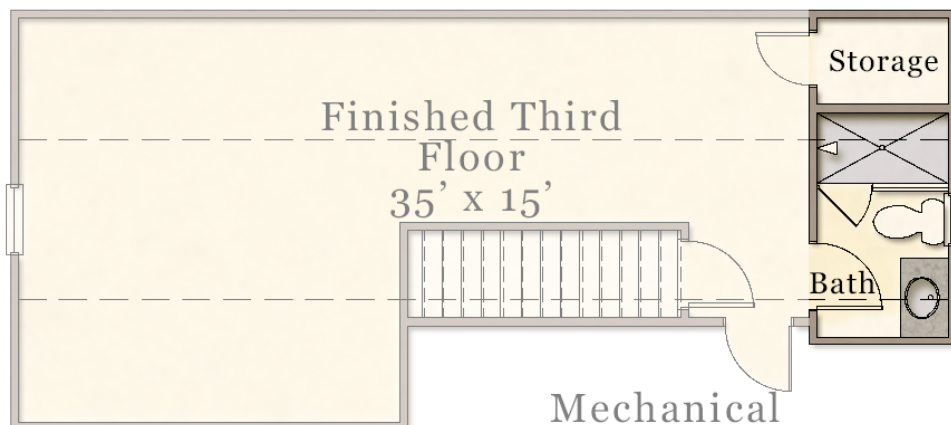
Approx. 573 sq. ft. unfinished



Optional Finished Third Floor (Approx. 573 sq. ft.)

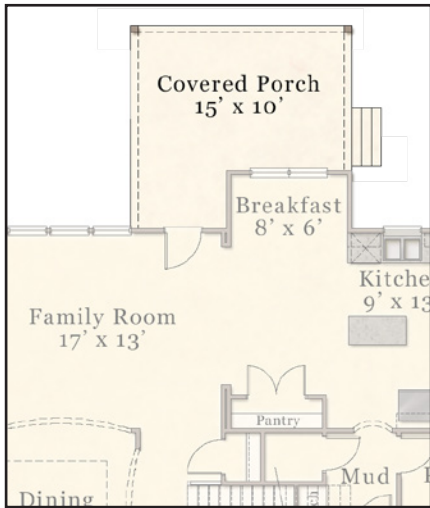


Optional Finished Third Floor with Bath (Approx. 573 sq. ft.)

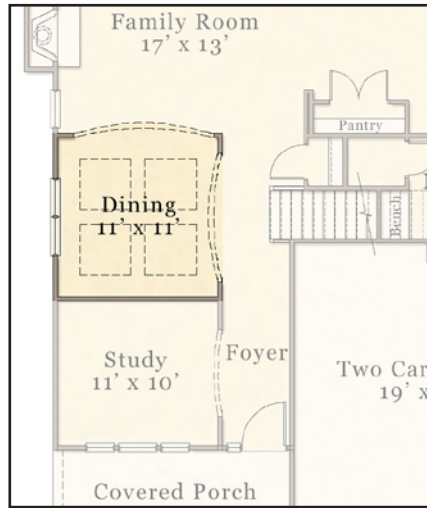


FIRST & SECOND FLOOR OPTIONS

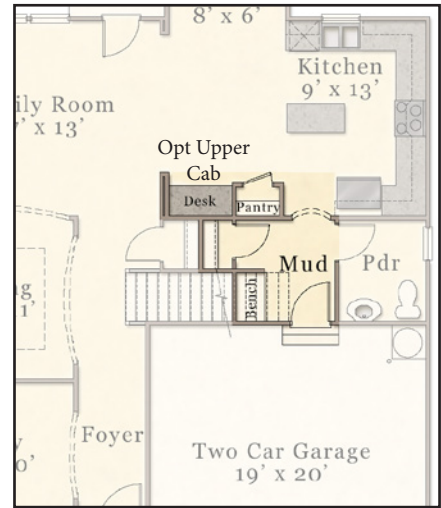
Covered Porch



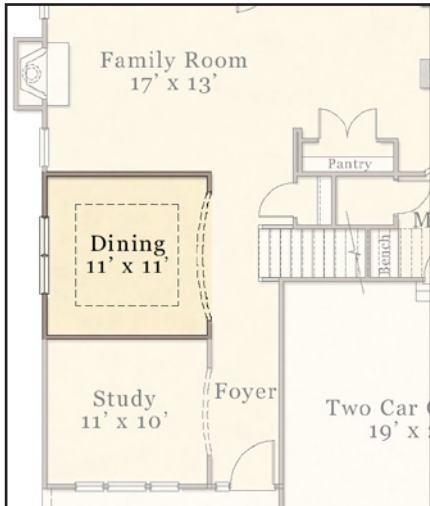
Coffered Ceiling in DR



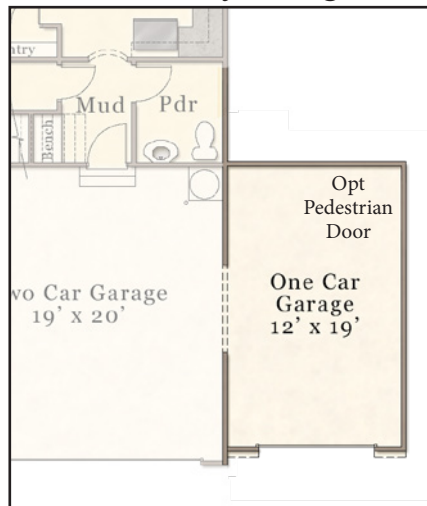
Desk



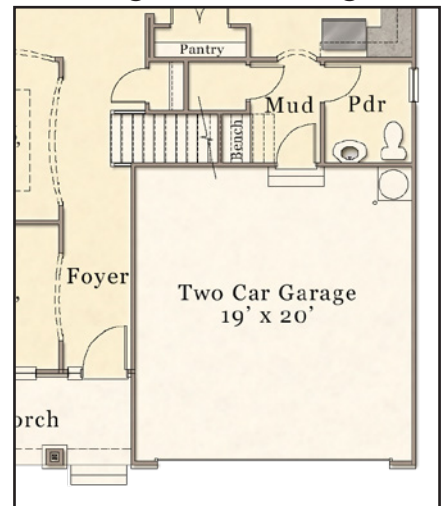
Dining Room Opening



Third Bay Garage



Single Door Garage



Deluxe Master Bath



Bedroom 4

