



THE BEAUFORT



CRAFTSMAN KS ELEVATION

SQUARE FEET: 2,900 TO 3,950

BEDROOMS: 4 TO 5

BATHROOMS: 3.5 TO 4.5



Single Door Garage



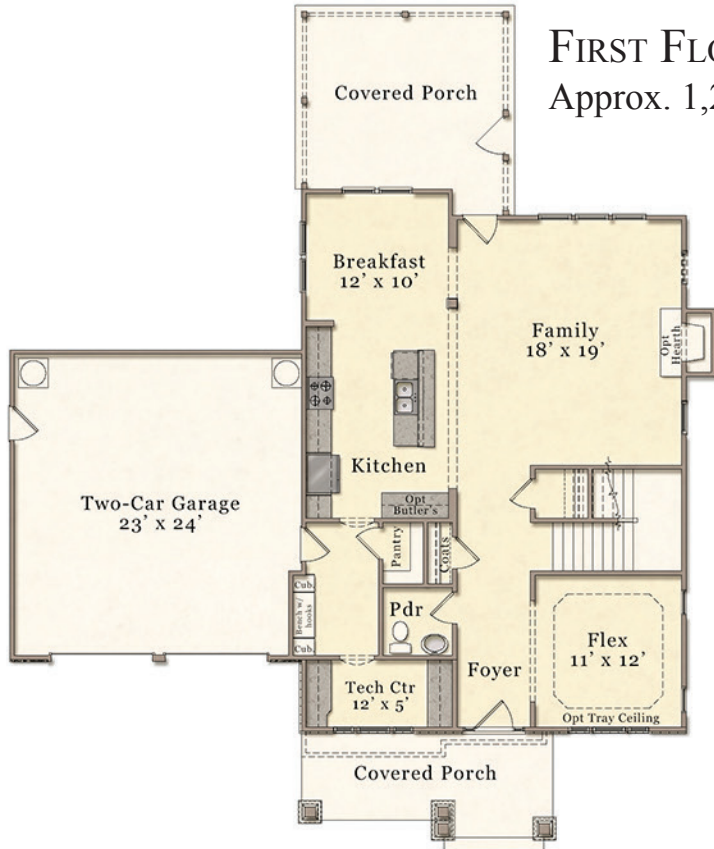
McKee Homes
101 Hay Street • Fayetteville, NC 28301
Sales: 910-672-7296 • Main Office: 910-475-7100
sales@mckeehomesnc.com • www.McKeeHomesNC.com



These plans are for marketing purposes only. Square footage and dimensions may vary and are not guaranteed. Specific features and options vary from home to home and from one community to another. We reserve the right to substitute equipment, materials and appliances with items of equal or higher value at our own discretion. Floor plans are the copyright protected property of McKee Homes. © 2014 McKee Homes. All rights reserved.

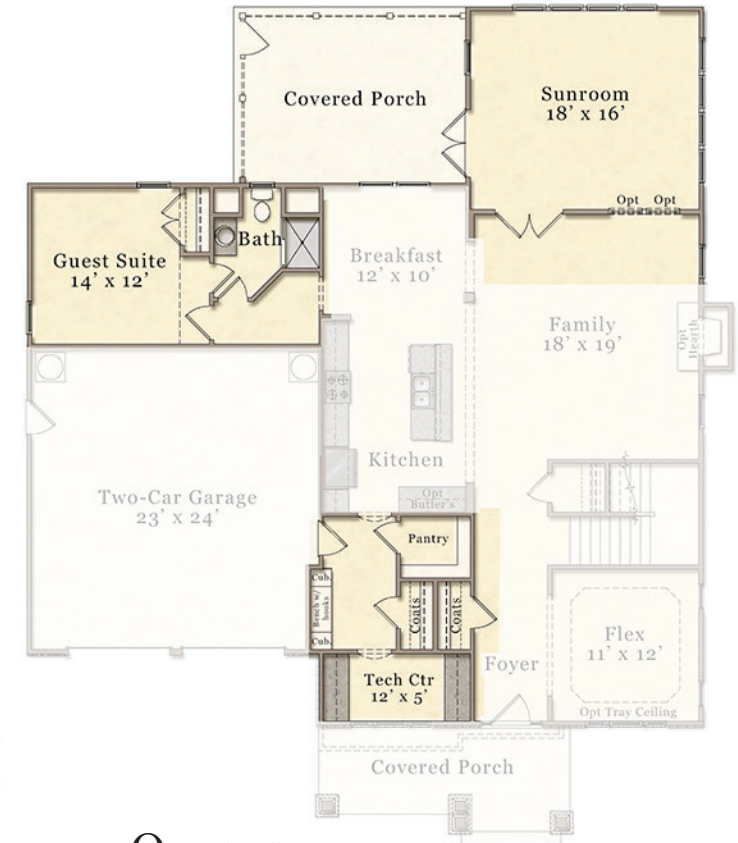
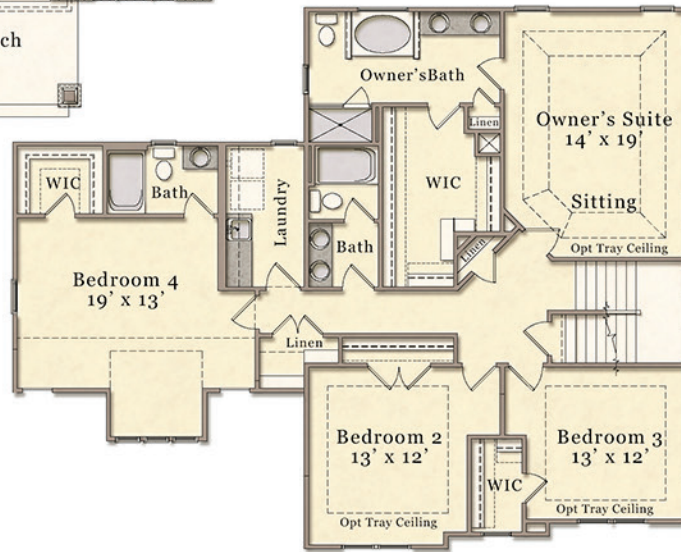
FIRST FLOOR

Approx. 1,200 Sq. Ft.

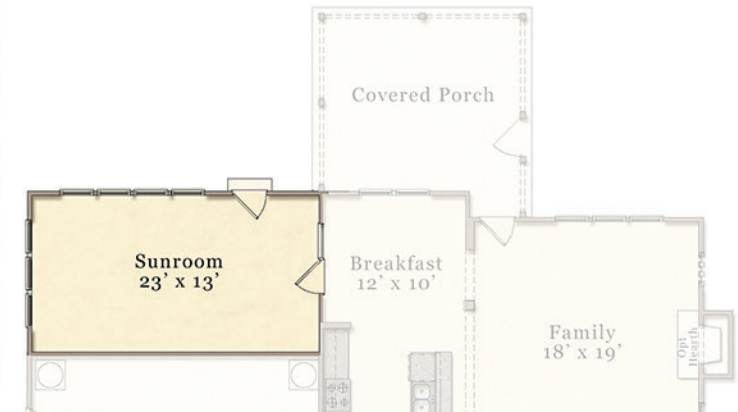


SECOND FLOOR

Approx. 1,700 Sq. Ft.



OPTIONS



THIRD FLOOR

Approx. 400 Sq. Ft.
When Finished



McKee Homes
101 Hay Street • Fayetteville, NC 28301
Sales: 910-672-7296 • Main Office: 910-475-7100
sales@mckeehomesnc.com • www.McKeeHomesNC.com

