



THE HARRIS



CLASSIC KS COLLECTION

SQUARE FEET: 2,768

BEDROOMS: 4

BATHROOMS: 3.5



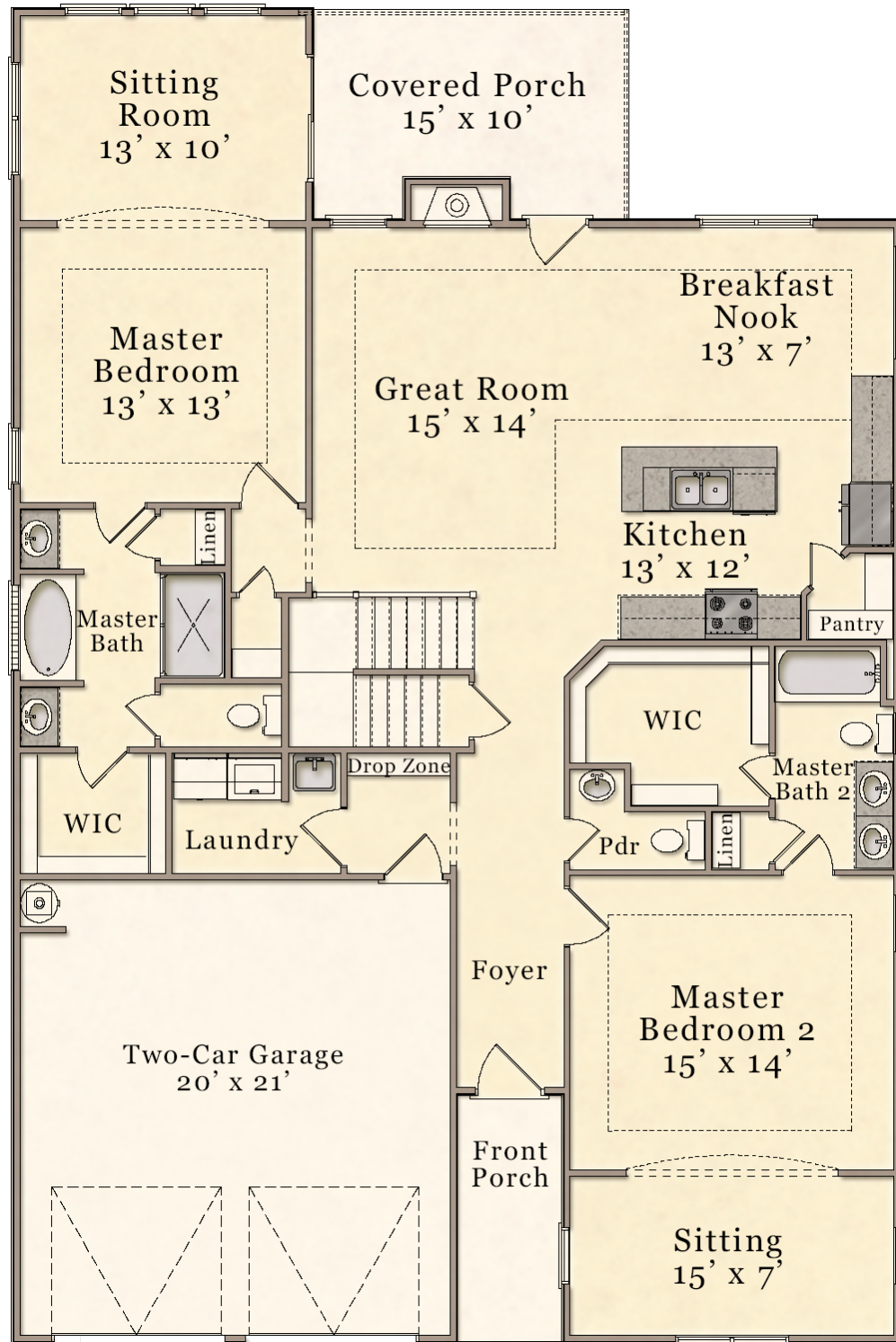
McKee Homes
109 Hay Street, Suite 301 • Fayetteville, NC 28301
Sales: 910-672-7296 • Main Office: 910-475-7100
sales@mckeehomesnc.com • www.McKeeHomesNC.com



Plans and elevations are artist's renderings only and used for marketing purposes. Stated dimensions and square footage are approximate and should not be used as representation of the home's precise or actual size. McKee Homes reserves the right to make changes to these floor plans, specifications, dimensions, designs, features and elevations without prior notice. We may need to substitute equipment, materials and appliances with items of equal or higher value at our own discretion. Floor plans are the copyright protected property of McKee Homes. © 2019 McKee Homes. All rights reserved. v1218-SV2

FIRST FLOOR

Approx. 1,863 Sq. Ft.



SECOND FLOOR

Approx. 905 Sq. Ft.

