



1420 Sky Vista Way Homesite 21
Ange Signature Homes
\$2,795,000



9,628 SF Finished
5 Bedrooms / 6 Full Baths / 2 Half Baths
First Floor Owners Retreat
& Private Guest Suite
Full Finished Walk-out Daylight Basement
Breathtaking Oasis with Pool & Cabana
4 Car Garage

Exterior:

- Magnificent Italian Villa style all brick home with timeless architectural details
- Lots of windows on all sides/levels for abundant natural light
- Arched column front porch with grand double door entry
- Large covered rear porch
- Relaxing pool and cabana w/fireplace and full bath
- Circular driveway
- 4 car garage
- Nestled on spacious 1 Acre homesite

Interior:

- Impressive two story foyer with balcony overlook
- Exquisite first floor owners retreat has a cathedral ceiling, two spacious walk-in closets, luxurious spa-bath with soaking tub and large shower
- First floor guest bedroom with private bath and walk-in closet
- Main level study with French doors
- Dream kitchen has it all – designer appliances include Sub-Zero refrigerator and freezer columns, Wolf ovens/cooktops, two dishwashers, large island with The Galley Sink Station, sunfilled breakfast area and huge walk-in pantry
- Grand vaulted ceiling family room, with natural wood beams and balcony overlook, flows out through glass doors onto the covered porch. Enjoy indoor-outdoor living!
- Elegant dining room with wine display wall has adjoining butler's pantry that connects to kitchen
- Convenient mudroom
- Two laundry rooms
- Front and rear staircases plus future elevator to all 3 floors
- Each spacious bedroom has a walk-in closet and ensuite bath
- Walk-out daylight basement features an enormous recreation room 39' x 23', entertainment bar, fitness room and craft room

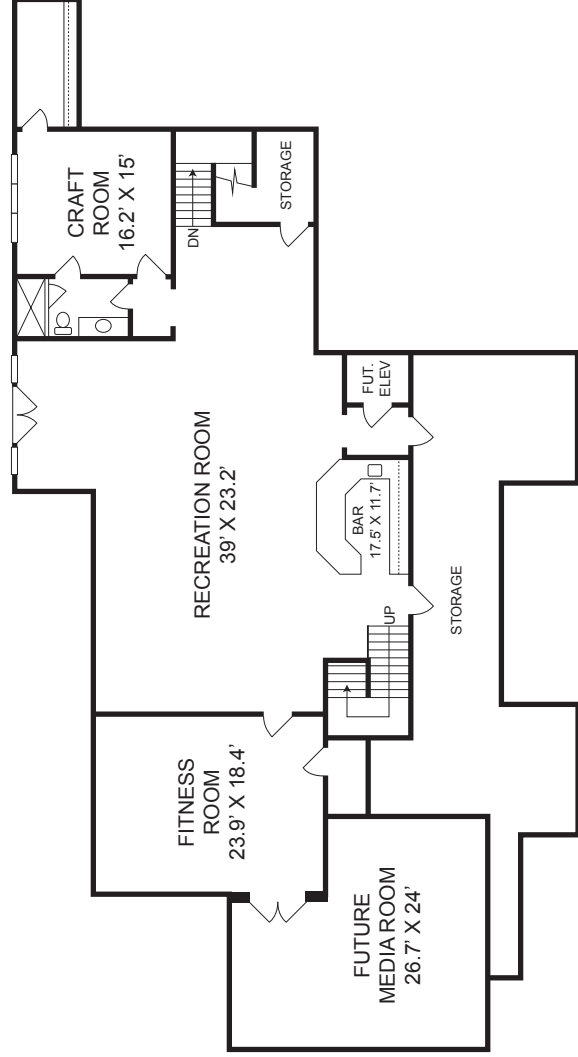
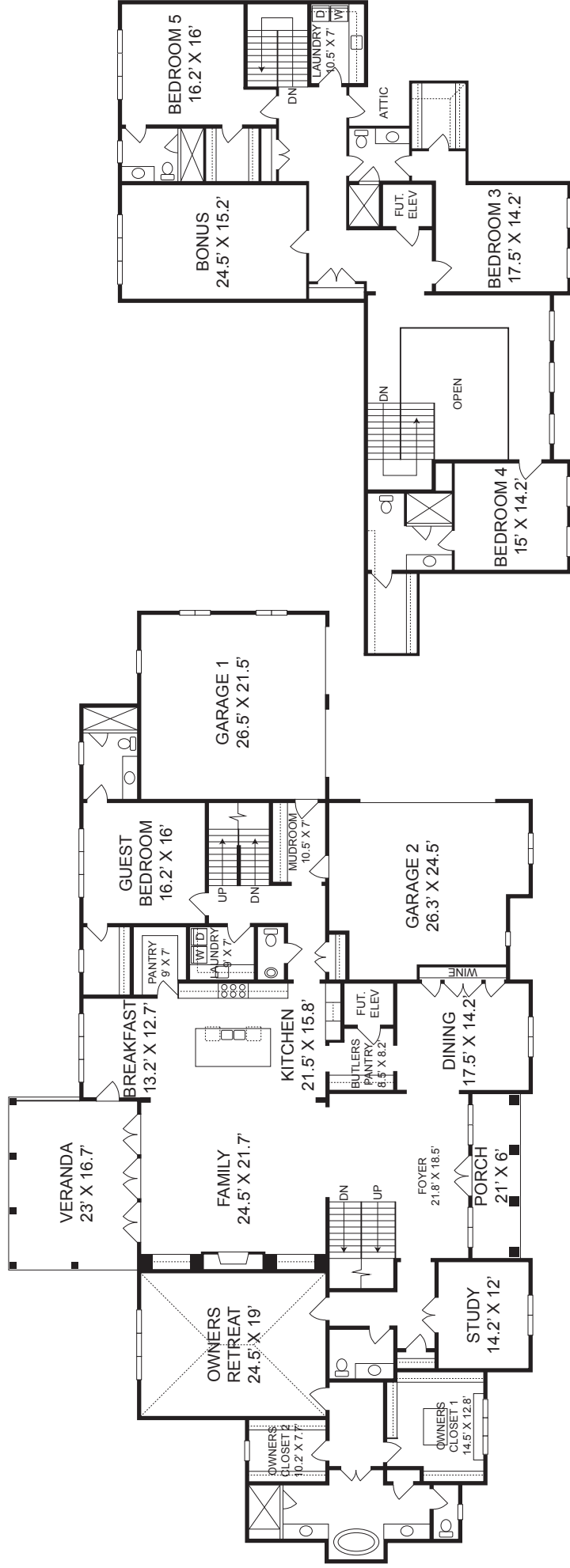
www.SouthernHillsEstates.com

919.926.5510 | SouthernHills@FMBnewhomes.com

Preliminary information only. Prices and specifications subject to change without notice. 3.5.21



Estate Communities, LLC
Henry MacNair, Manager



Ange Signature Homes **Southern Hills Estates Homesite #21**

The builder reserves the right to revise noted specifications or substitute features, architectural details or materials. Illustrations and floorplans are for discussion purposes only and not part of a legal contract. Room sizes are approximate. 2-4-20

1420 Sky Vista Way Homesite 21
Ange Signature Homes

A BREATHTAKING OASIS - THE ULTIMATE IN OUTDOOR LIVING



Resort Style Pool & Spa Features:

- Spacious pool with swim lane (35' x 19')
- Relaxing sun ledge with umbrella holder & 2 bubblers
- 4 crystal fountain deck jets
- Soothing spa with therapeutic adjustable waterway jets

Cabana Features:

- Covered porch with fireplace and gas grill (16.8' x 13')
- Pool bath with shower
- Storage room

