



**Newbury**

**C**

## INFORMATION ABOUT THIS PLAN:

- 4 bedrooms, 2.5 baths
- Up to 2,946 SF
- Flex space
- Master on main
- Open kitchen and family room
- Upstairs bonus room and study
- Options include a downstairs office, sunroom and an upstairs guest suite



**A**

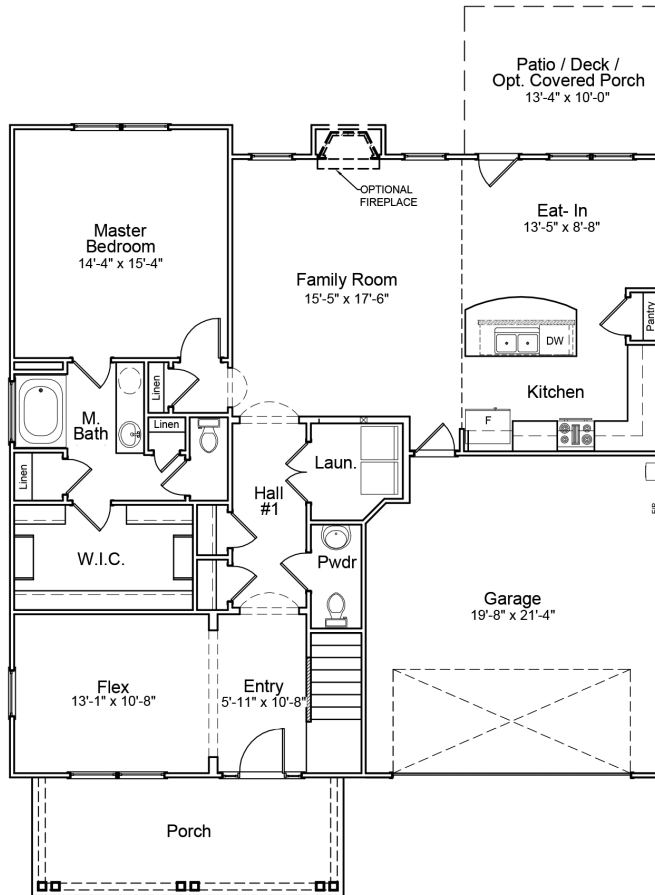


**B**

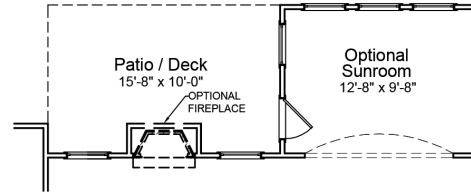


◀ Please see reverse side for floor plan.

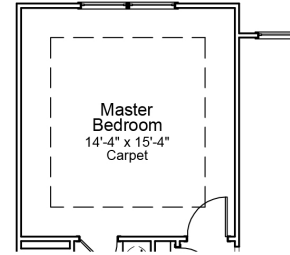
**[mungo.com](http://mungo.com)**



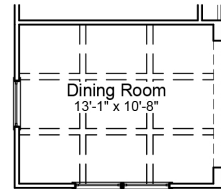
**"A" 1st Floor Plan**



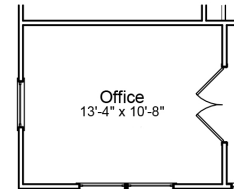
**Sunroom Option**  
(NOT AVAILABLE WITH OPTL. COVERED PORCH)



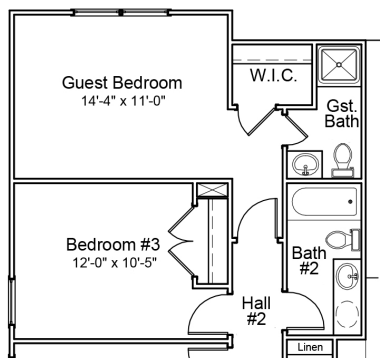
**Optional Box Ceiling @ Master Bedroom**



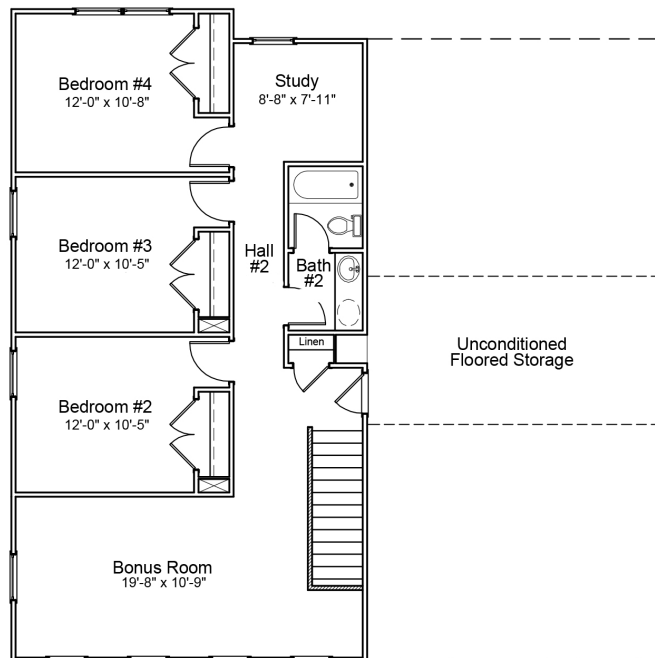
**Dining Room Option @ Flex**



**Office Option @ Flex**



**Guest Bedroom Option**



**"A" 2nd Floor Plan**

Architectural renderings and floor plans are artist depictions only and may show optional or upgraded features. Specifications and colors may vary and are subject to change without notice.