

The Sutton

WYNDWATER



Coastal Craftsman



Modern Farmhouse



Stick

WYNDWATER
BY ROBUCK HOMES

**ROBUCK
HOMES** Since 1926

RobuckHomes.com

*All plans, details, and renderings are approximate and subject to change.
Illustrations may not represent finished details. 12/23*

FMB
FONVILLE MORISEY BAREFOOT



Screened Patio
16'-6" x 10'-0"

Optional Screened Patio in lieu of Covered Patio



Screened Patio
16'-6" x 10'-0"

Optional Screened Patio w/ Exterior Fireplace



Modern Farmhouse & Stick Elevation

Coastal Craftsman Elevation

Opt Patio Extension
13'-0" x 8'-0"

Covered Patio
16'-6" x 10'-0"

Family
17'-2" x 19'-2"

Primary Suite
14'-10" x 16'-1"

Bedroom 2
14'-10" x 11'-2"

Bedroom 3
14'-8" x 11'-2"

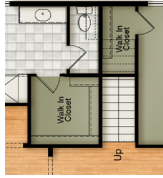
Two Car Garage
20'-7" x 21'-1"

Foyer

Porch



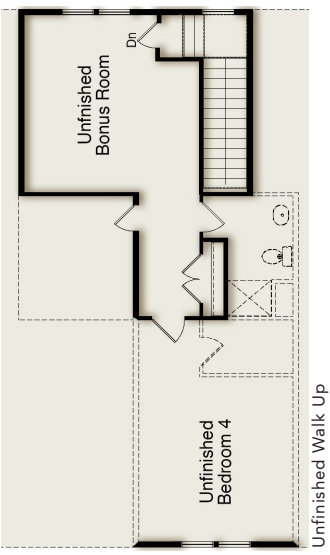
Optional Sliding Glass Door at Family



Stairs with Optional Walk Up



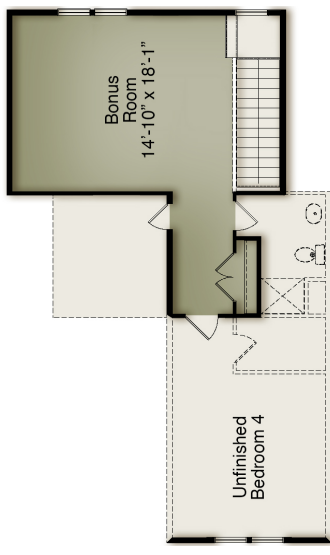
Optional Dual Vanity



Unfinished Bedroom 4

Unfinished Bonus Room

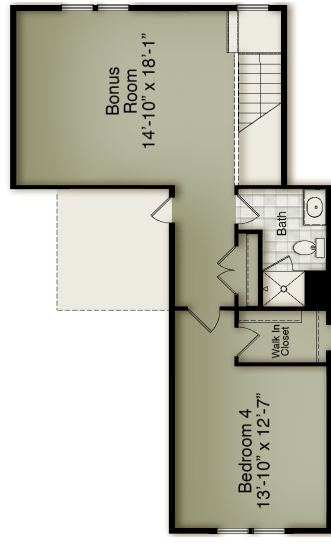
Unfinished Walk Up



Bonus Room
14'-10" x 18'-1"

Unfinished Bedroom 4

Optional Walk Up with Finished Bonus



Bedroom 4
13'-10" x 12'-7"

Bonus Room
14'-10" x 18'-1"

Optional Walk Up with Finished Bonus & Finished Bed/Bath

First Floor

Second Floor