

# The Graylyn

Alternate Elevations



Country Chic



Modern Farmhouse



# The Graylyn

Well Equipped to Support Your Busy Lifestyle

## Key Features of Base Plan

- Stunning Courtyard design offers an impressive curb appeal
- Welcoming entry includes an elegant mahogany front door
- 12 foot ceilings in kitchen, family & dining  
10 foot ceilings on rest of first floor
- Impressive 8' solid core interior doors throughout first floor
- Versatile 1st floor flex room to design as your personal space
- Gourmet kitchen design with all the latest appliances and large gathering island
- Inviting covered back porch for outdoor living
- Spacious walk in pantry
- Large mud room with convenient drop zone
- Luxury owner's suite with private entry
- Generous laundry room with cabinetry and a separate door to the owner's retreat
- Beautiful guest bath with a free standing tub

- Large walk in closet has wood shelving
- The well designed second floor includes 3 bedrooms, hall bath, buddy bath and a flexible loft space

## Available Luxury Options

- Guest suite in lieu of flex room
- Covered rear porch with cozy fireplace
- Screened back porch with grilling deck
- Tall panel Sliding glass doors off the family room
- Generous finished bonus room over the two or three car garage
- Basement with bedroom, full bath, office, theatre room, recreation room, and finished storage
- Entertainment bump out



# The Graylyn



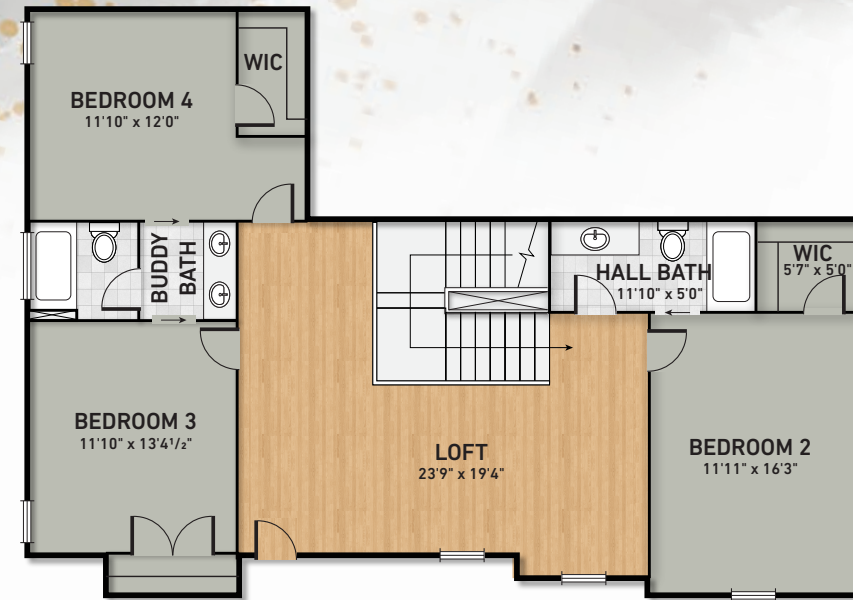
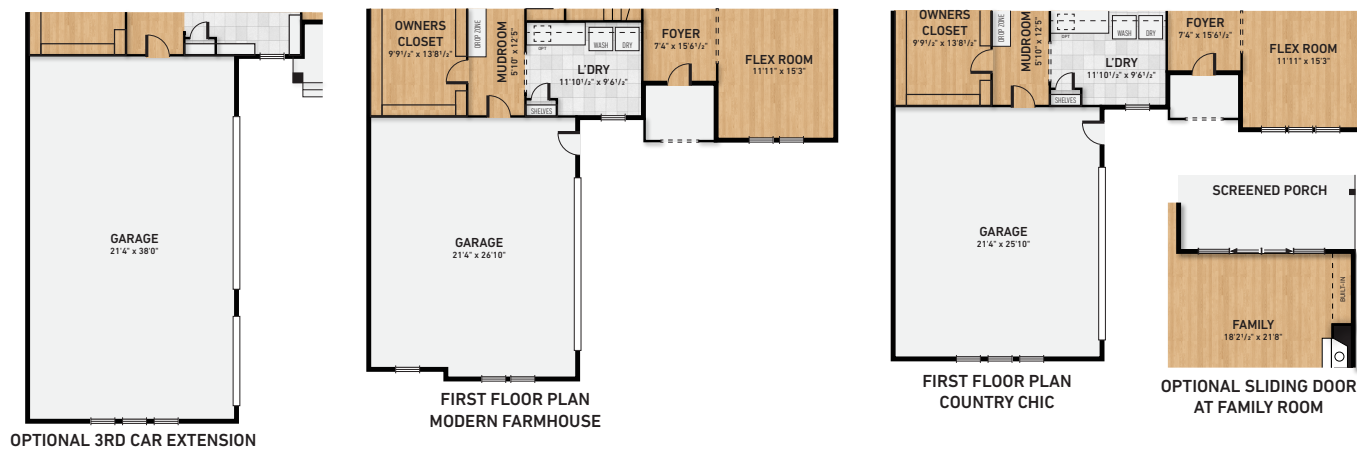
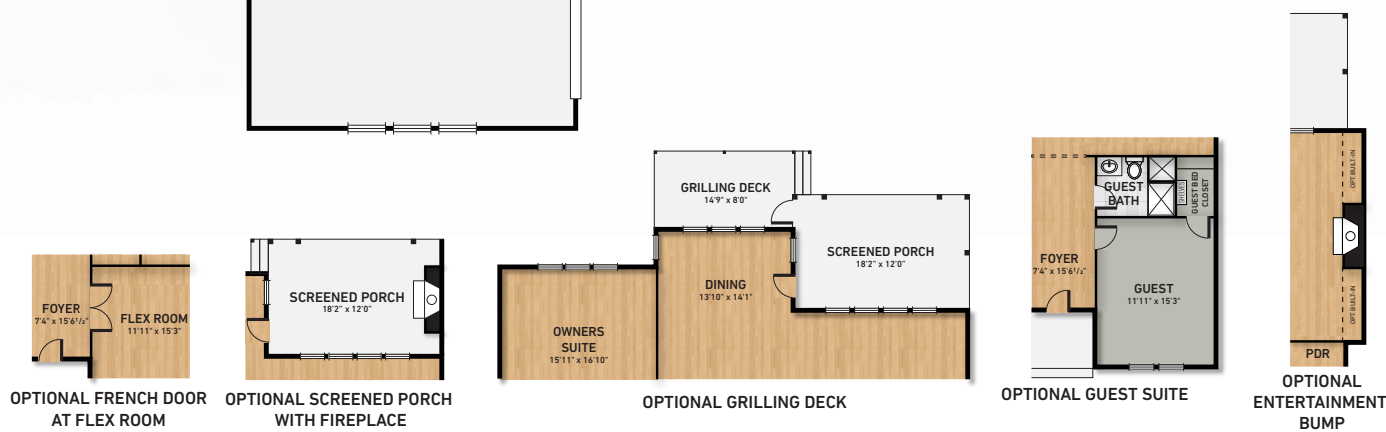
Eastern Seaboard Elevation



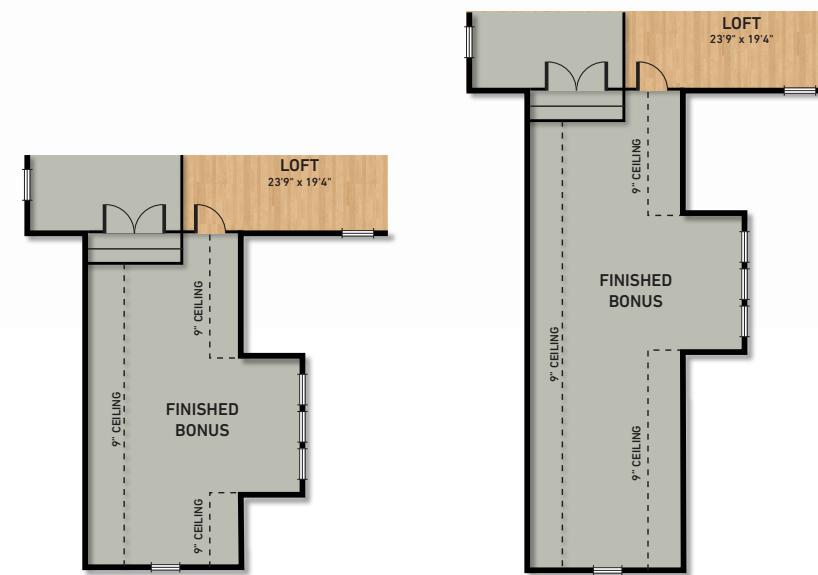
# The Graylyn



FIRST FLOOR PLAN

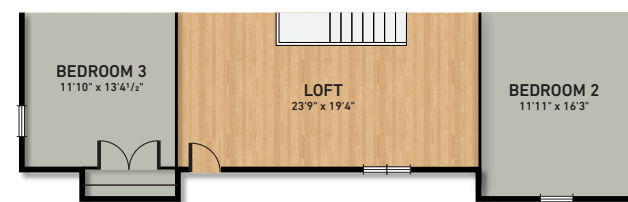


SECOND FLOOR PLAN

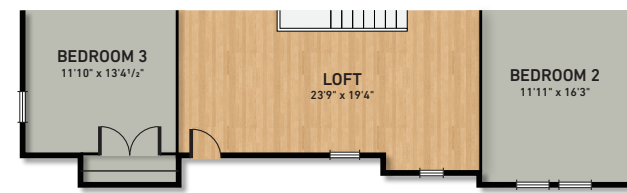


OPTIONAL FINISHED OR UNFINISHED BONUS ROOM

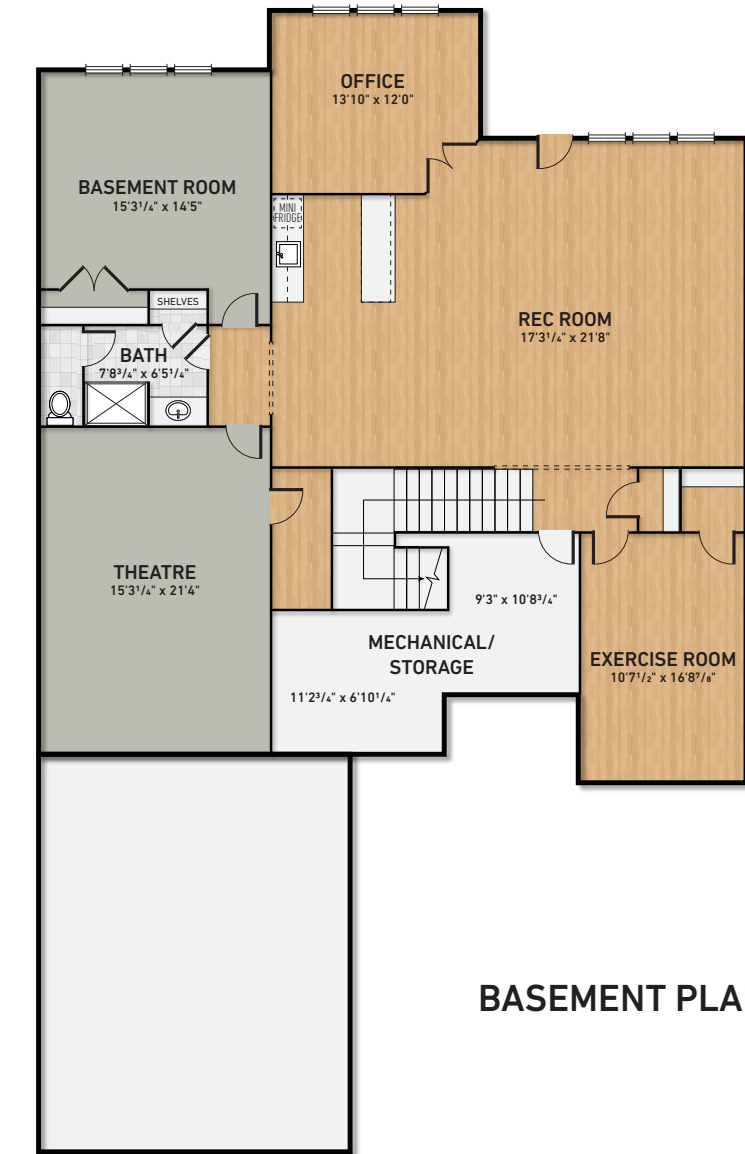
OPTIONAL 3RD CAR EXTENSION WITH FINISHED OR UNFINISHED BONUS ROOM



SECOND FLOOR PLAN MODERN FARMHOUSE



SECOND FLOOR PLAN COUNTRY CHIC



BASEMENT PLAN

\*Floors plans, elevations, and options are approximate and subject to change without notice. Images are only for illustrative purposes and not an exact representation of the products, colors, or design. Some items shown are optional and available at an additional cost. Due to differences in printing and monitors, the colors of products may also appear different from those displayed. 3.21

[www.DiscoverStoneridge.com](http://www.DiscoverStoneridge.com)

