

# THE WHITSUN

Alternate Elevations



Country Chic



Modern Farmhouse



BONTERRA

CHAPEL HILL, NC

## THE WHITSUN

Well Equipped to Support Your Busy Lifestyle

### Key Features of Base Plan

- Grand foyer welcomes you to 10 foot ceilings in family, kitchen and dining
- Elegant Mahogany front door
- Impressive 8' solid core interior doors throughout first floor
- Versatile flex room to design as your personal space
- Gourmet kitchen design with all the latest appliances and large gathering island
- Inviting screened back porch for outdoor living
- Convenient One of a kind tech center off the kitchen
- Open dining area offers beautiful window views
- Spacious walk in pantry
- Sizeable mud room with convenient drop zone
- 1st floor owner's suite private entry
- Beautiful owner's bath includes a free standing tub

- Large walk-in closet with wood shelving cabinetry
- Impressive second story includes three bedrooms with walk in closets, a hall bath, buddy bath and a casual gathering room with picturesque windows

### Available Luxury Options

- Screened porch with fireplace
- Grilling deck
- Tall panel sliding glass doors off the family room
- Generous bonus room over the second or third car garage
- 3 car garage
- Scullery
- Grand Owner's Retreat



BONTERRA

CHAPEL HILL, NC

## THE WHITSUN



Eastern Seaboard Elevation

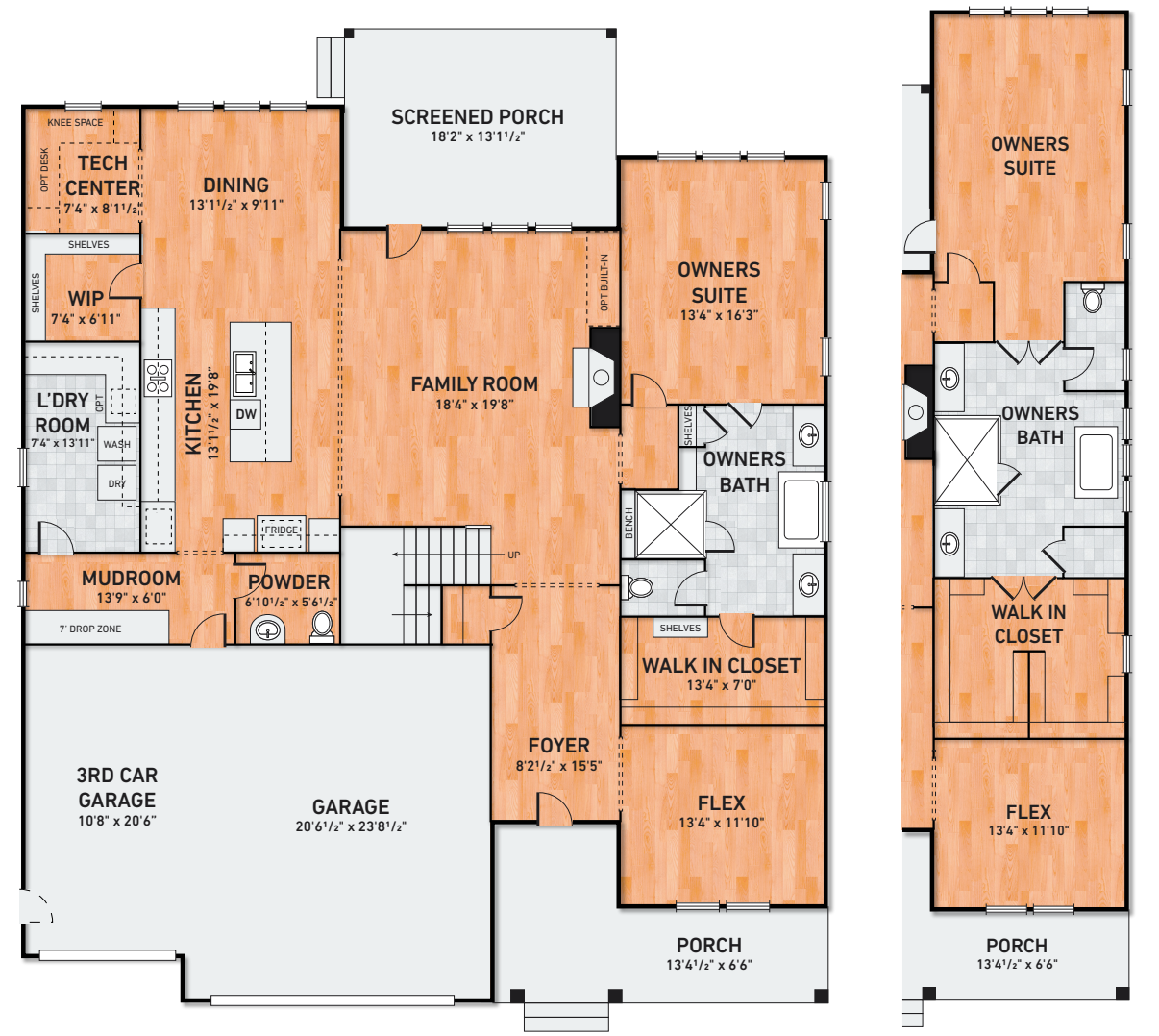
ROBUCK  
HOMES *Since 1926*



[www.RobuckHomes.com](http://www.RobuckHomes.com)

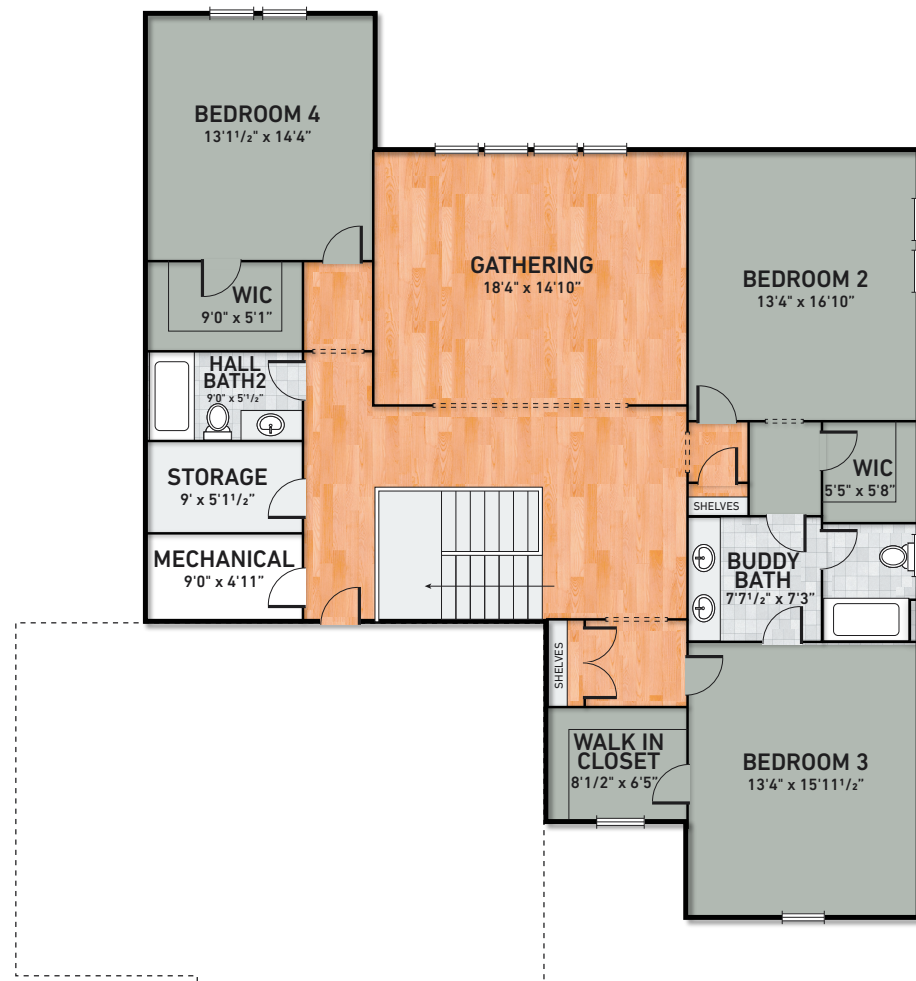
FMB  
FONVILLE MORISEY BAREFOOT



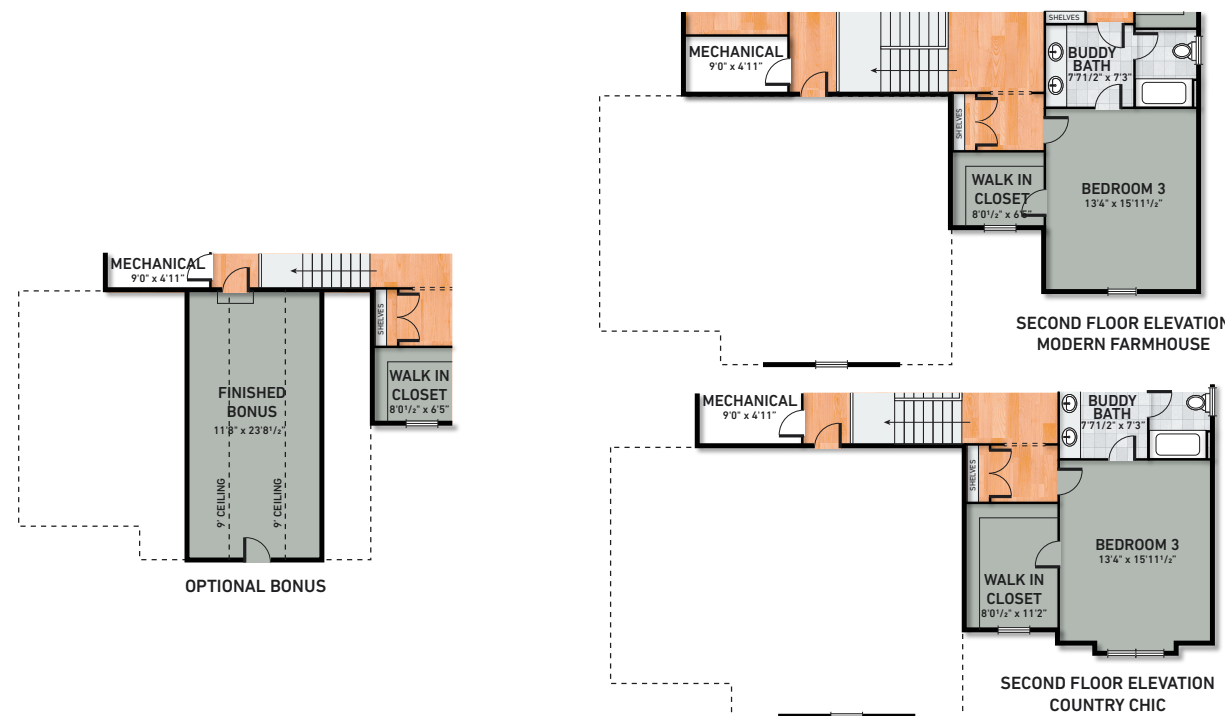


FIRST FLOOR PLAN

OPTIONAL OWNERS RETREAT

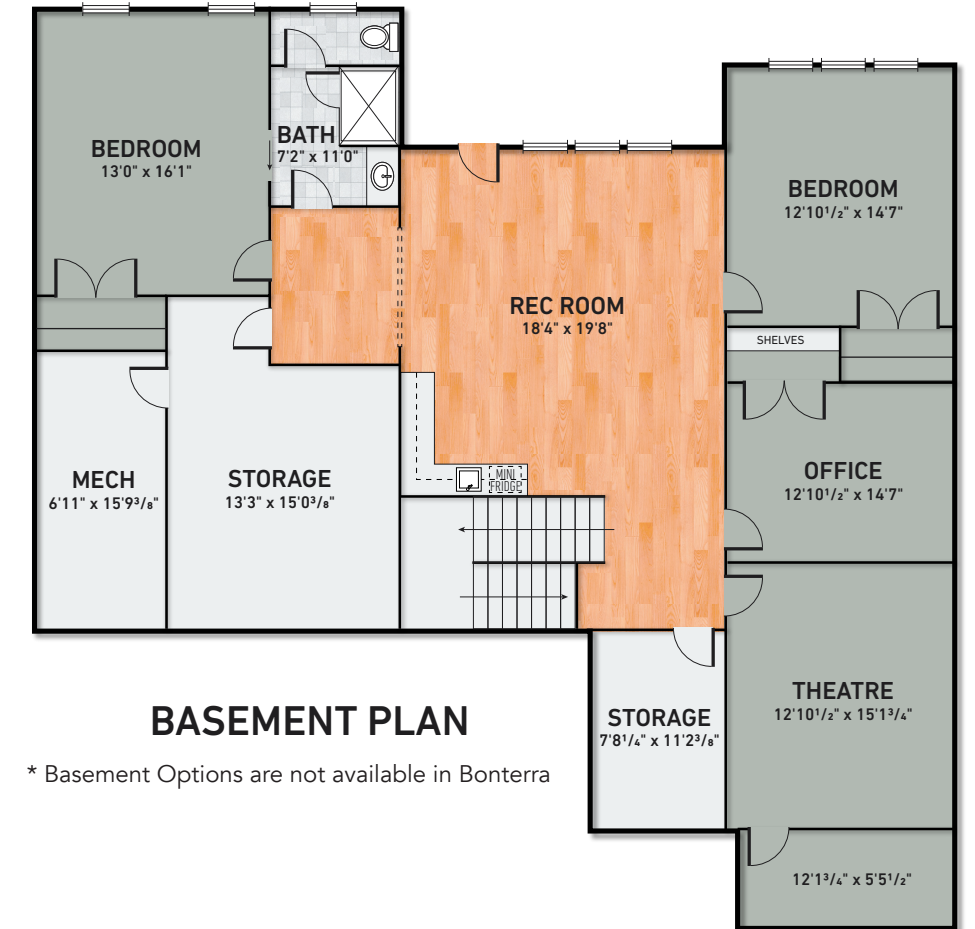


SECOND FLOOR PLAN



# THE WHITSUN

BONTERRA  
CHAPEL HILL, NC



BASEMENT PLAN

\* Basement Options are not available in Bonterra



[www.RobuckHomes.com](http://www.RobuckHomes.com)



\* Every precaution has been taken to verify the accuracy of the above details. However, prospective purchasers are advised to make their own inquiries. Builder reserves the right to make substitutions in products and materials of equal or greater value. All items are subject to change without notice. We do not accept responsibility for any errors or omissions. 4.27.21