

Laurel Ridge

THE ESTATES

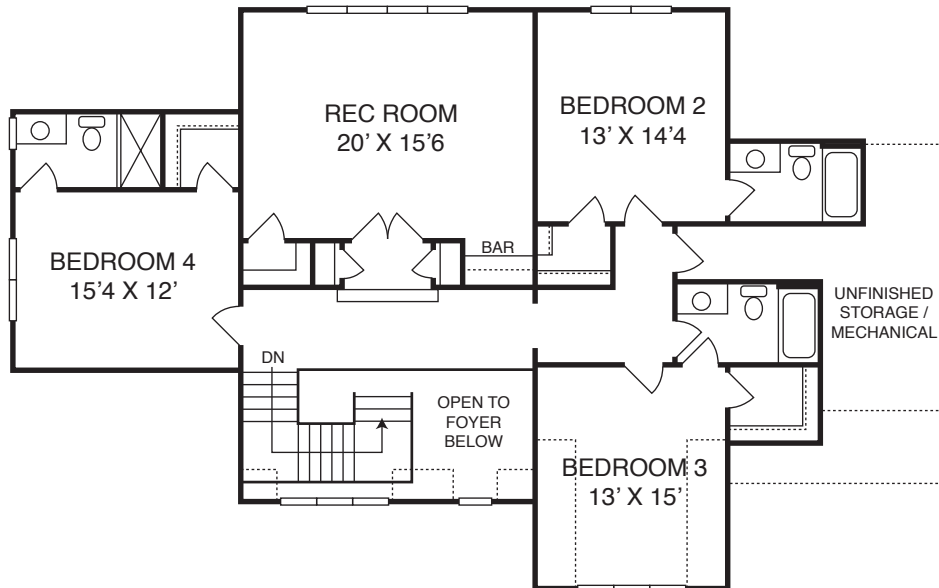
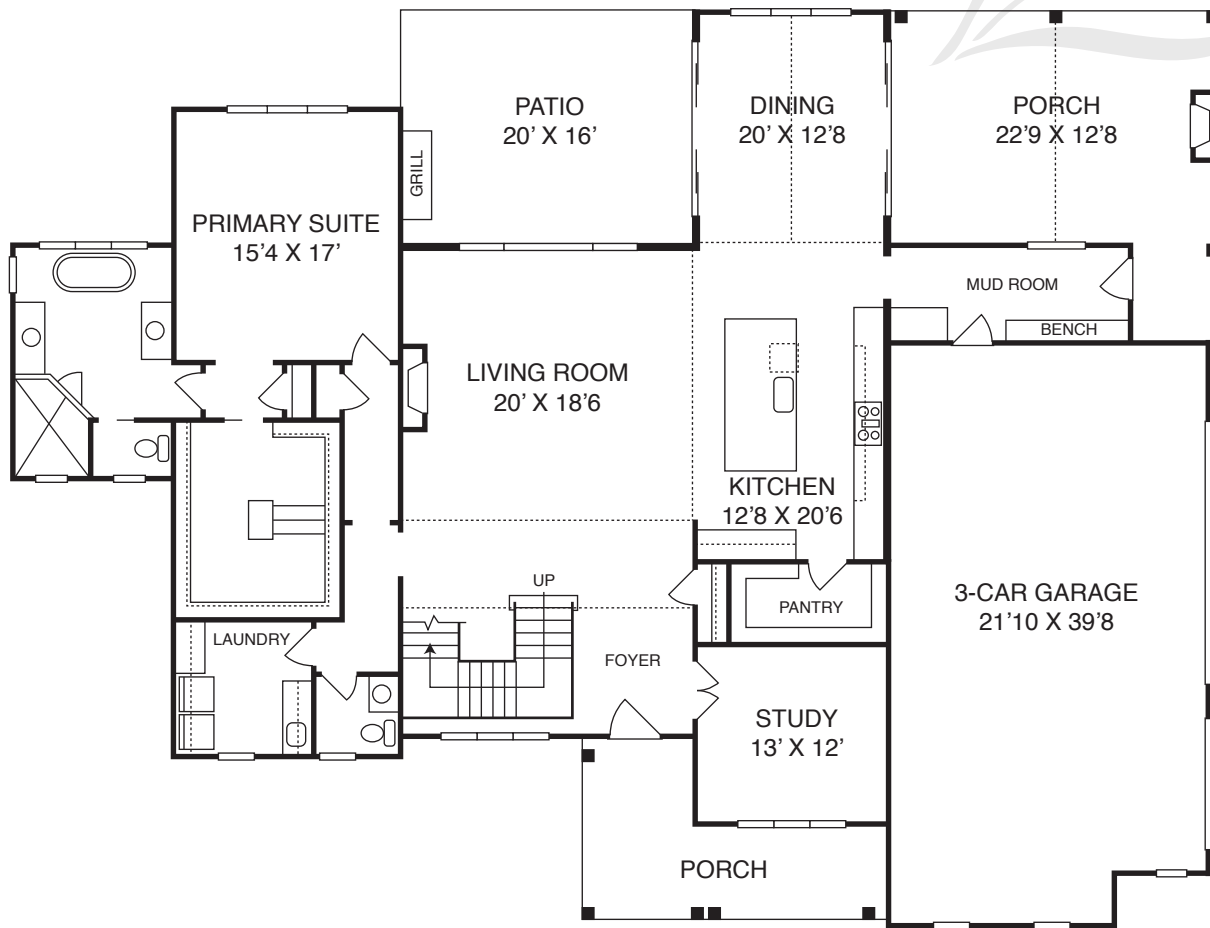
SOPHISTICATION • PRIVACY • CONVENIENCE



Poythress Construction Company, Inc.

THE LAUREN

Homesite 44 // 300 Blufftonwood Drive • Pittsboro, NC
4 BDR // 4.5 BA // 3948 SF // 4.3 Acres
First Floor Owner's Retreat // Study/Office Main Level
Screen Porch with Fireplace // 3 Car Garage
MLS# TBD // \$TBD



Poythress Construction Company, Inc

THE LAUREN