



THE REYNOLDS



COASTAL KS ELEVATION

SQUARE FEET: 2,330 TO 2,425

BEDROOMS: 4

BATHROOMS: 3

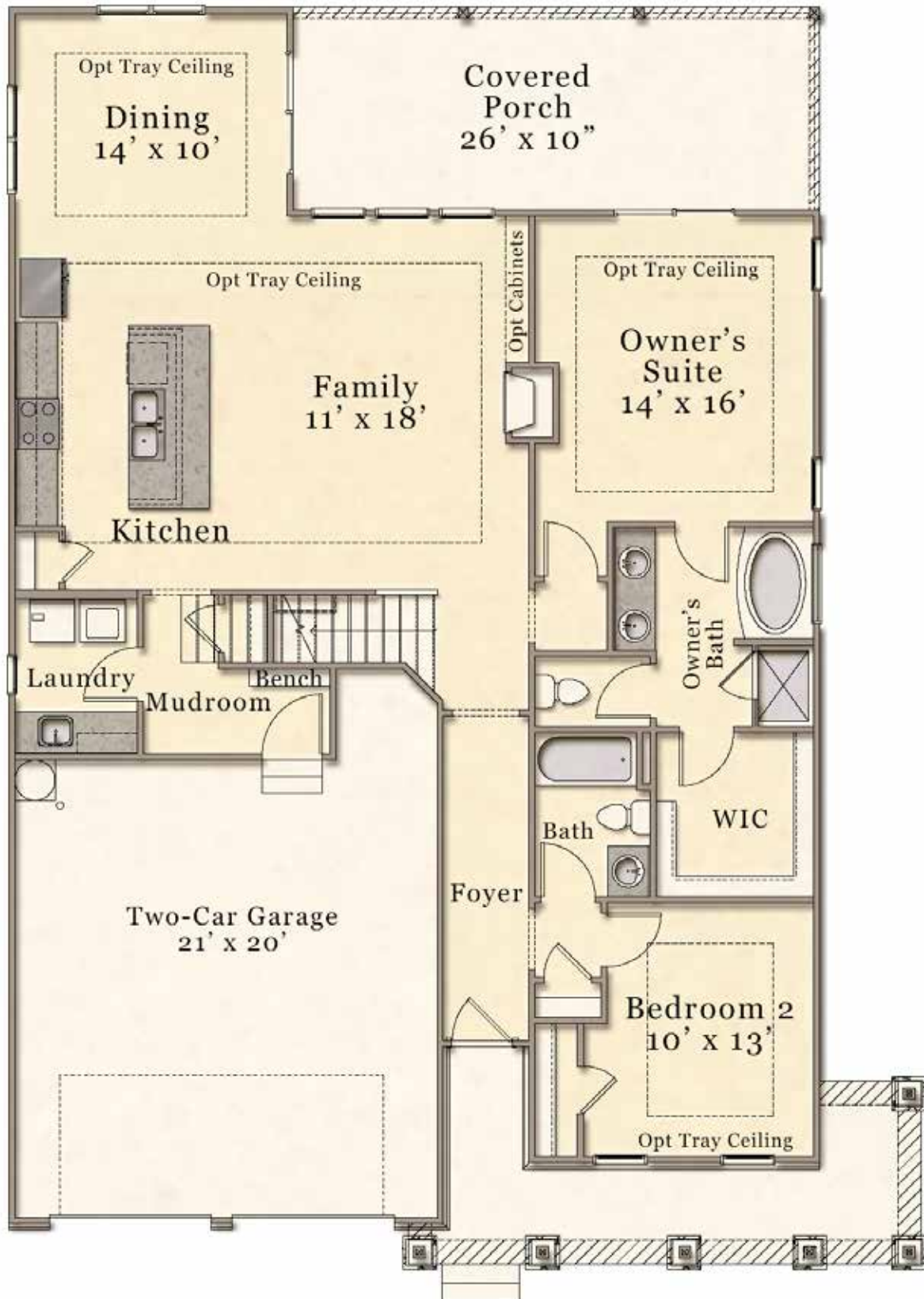


McKee Homes
101 Hay Street • Fayetteville, NC 28301
Sales: 910-672-7296 • Main Office: 910-475-7100
sales@mckeehomesnc.com • www.McKeeHomesNC.com

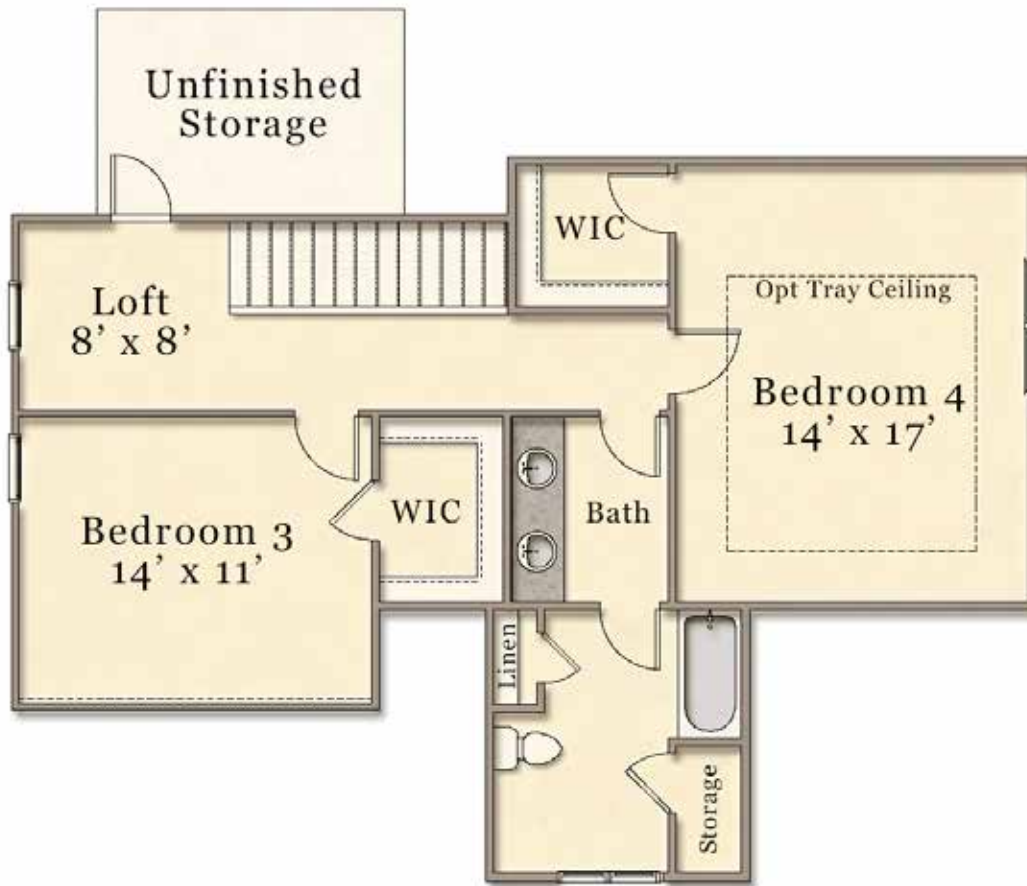


These plans are for marketing purposes only. Square footage and dimensions may vary and are not guaranteed. Specific features and options vary from home to home and from one community to another. We reserve the right to substitute equipment, materials and appliances with items of equal or higher value at our own discretion. Floor plans are the copyright protected property of McKee Homes. © 2014 McKee Homes. All rights reserved.

FIRST FLOOR
Approx. 1,555 Sq. Ft.



SECOND FLOOR
Approx. 775 Sq. Ft.



OPTIONS

SITTING ROOM Approx. 95 Sq. Ft.



SCREENED PORCH



SITTING ROOM WITH SCREENED PORCH Approx. 95 Sq. Ft.

