



# BELLA VISTA

• CUSTOM HOMES •

## 1113 Shadow Lake Drive Homesite 20 Sundance Signature Homes \$TBD



**5,133 SF**

**4 Bedrooms / 4 Full Baths / 1 Half Bath**

**First Floor Owner's Retreat**

**Rear Veranda and Patio**

**3-Car Garage**

**Exterior:**

- Exciting brick home with lots of windows
- Rear covered veranda – relax and enjoy
- Raised patio – great for grilling
- 3-car garage
- Lovely .68 acres of lush woods

**Interior:**

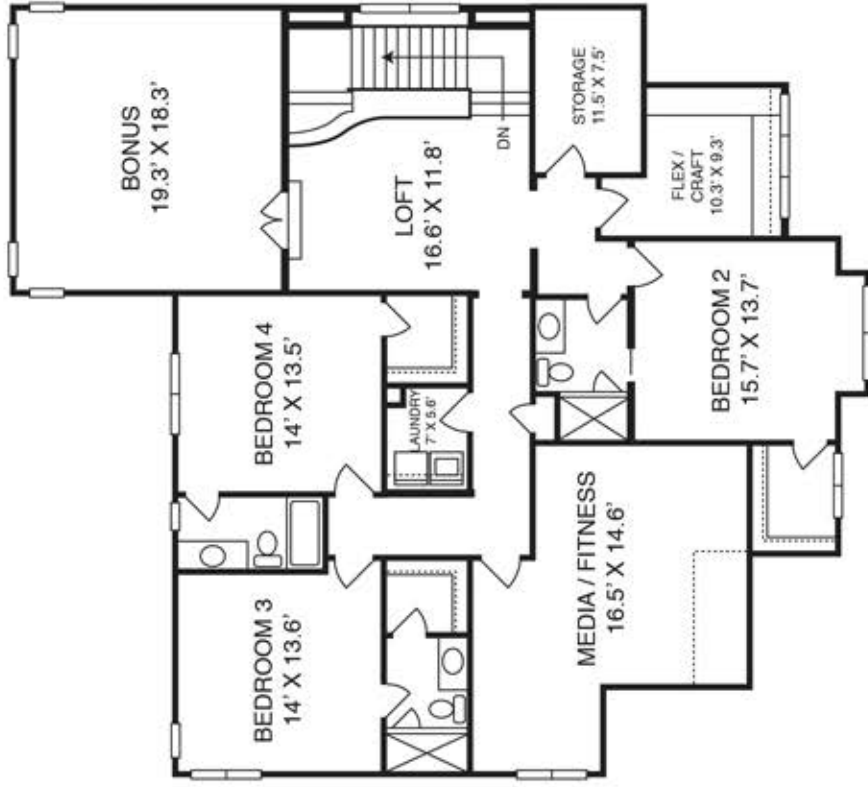
- Lavish first floor owner's retreat with tray ceiling, grand closet, and luxe bath
- Private first floor guest suite or study
- Breathtaking staircase opens to large loft area
- Remarkable chef's kitchen flows into spacious breakfast and family room with fireplace
- All bedrooms have adjoining baths and WICs
- Huge bonus room offers space for fun activities
- First and second floor laundry rooms
- Convenient mudroom
- Generous walk-in pantry plus butler's pantry

*Price, Features, Specifications, Plans, and Elevation Subject to Change without Notice 07/24/17*

[www.bellavistaraleigh.com](http://www.bellavistaraleigh.com) • 919.232.0498

Fonville Morisey Barefoot  
New Home Sales & Marketing





**Sundance Signature Homes**  
**Bella Vista Homesite #20**

The builder reserves the right to revise noted specifications or substitute features, architectural details or materials. Illustrations and floorplans are for discussion purposes only and not part of a legal contract. Room sizes are approximate. JUNE17