



BELLA VISTA

• CUSTOM HOMES •

1128 Shadow Lake Drive Homesite 57

Ange Signature Homes

\$1,128,000



5,571 SF Finished

4 Bedrooms/4 Full Baths/1 Half Bath

First Floor Owner's Retreat

Rear Covered Veranda

3 Car Side Entry Garage

Exterior:

- Inviting brick and shake home with covered entry
- Rear covered veranda for relaxing
- Impressive window details
- 3 car side entry garage
- Large .61 acre homesite

Interior:

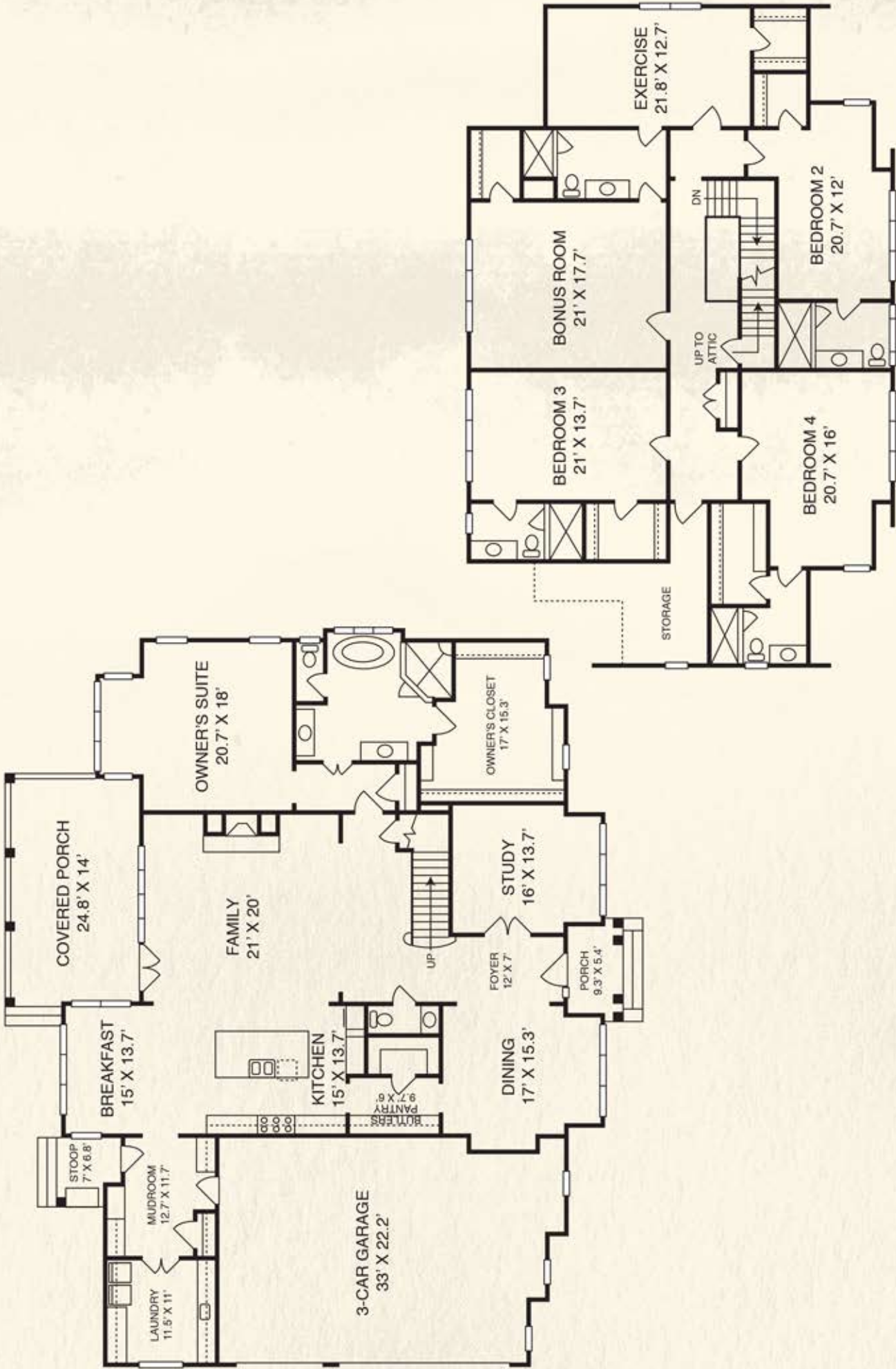
- Elegant first floor owner's retreat with sitting area, luxury filled bath, and grand walk-in closet with island
- Designer kitchen and sun-filled breakfast area open to spacious family room with fireplace
- Gracious formal dining room has adjoining butler's pantry
- Convenient mudroom opens into large laundry room
- French doors from foyer lead to handsome study
- Huge bonus room for fun activities
- Large fitness or craft room – you decide!
- All spacious bedrooms have adjoining baths and walk-in closets
- Walk-up unfinished attic for storage now or expansion later!

Price, Features, Specifications, Plans, and Elevation Subject to Change without Notice 09/21/17

www.bellavistaraleigh.com • 919.232.0498

Fonville Morisey Barefoot
New Home Sales & Marketing





Ange Signature Homes
Bella Vista Homesite #57

The builder reserves the right to revise noted specifications or substitute features, architectural details or materials. Illustrations and floorplans are for discussion purposes only and not part of a legal contract. Room sizes are approximate. MAY 16