



BELLA VISTA

• CUSTOM HOMES •

1100 Shadow Lake Drive Homesite 24

Legacy Custom Homes

\$1,090,000



4,791 SF

4 Bedrooms / 4 Full Baths / 1 Half Bath

First Floor Owner's Retreat

Private First Floor Guest Suite

Rear Veranda

3-Car Garage

Exterior:

- Exciting brick & siding home with remarkable window details
- Covered double door entry
- Rear covered porch with vaulted ceiling
- 3-Car Garage
- Nestles on .67 acre cul-de-sac homesite

Interior:

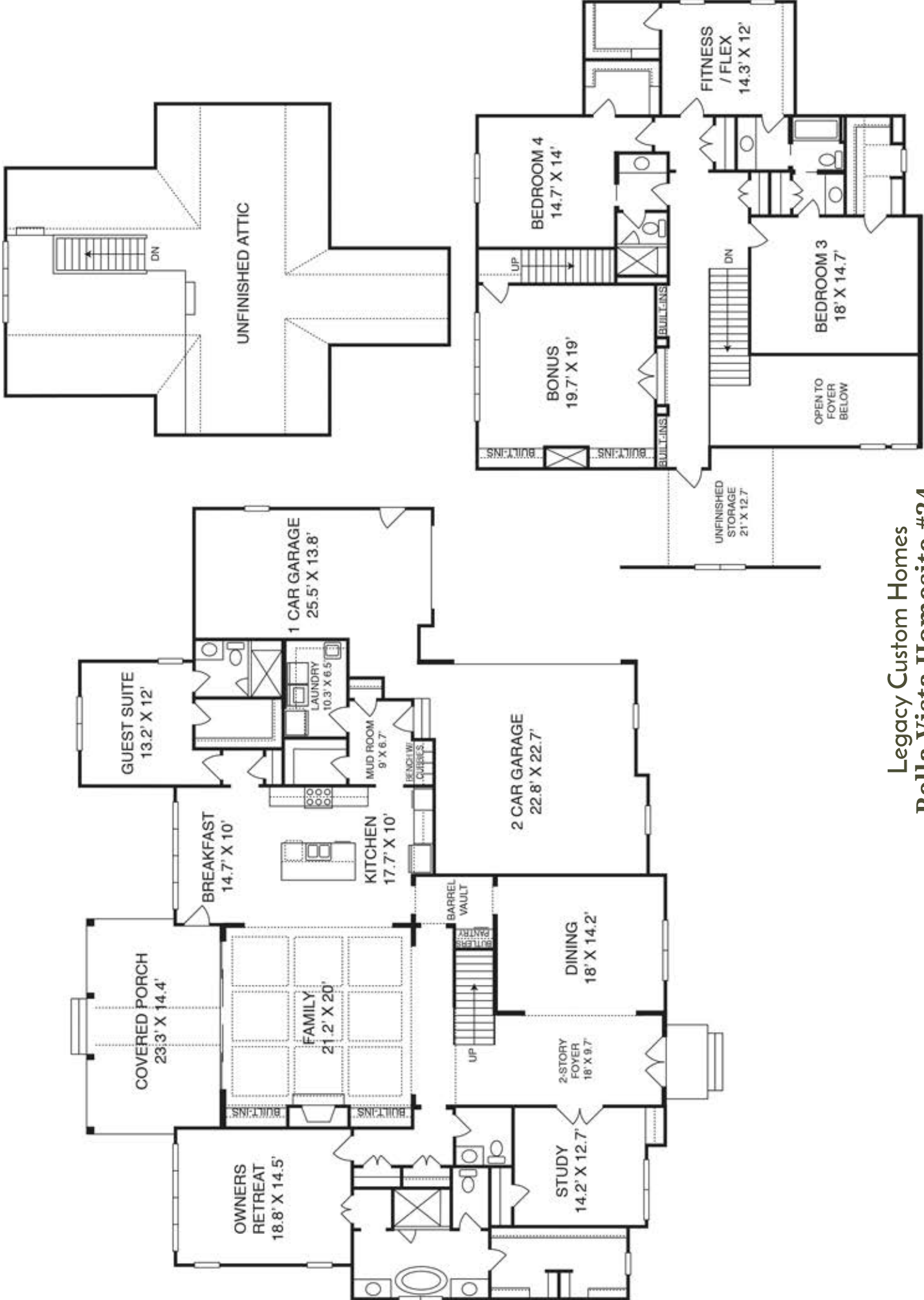
- Lofty two-story foyer
- Elegant first floor owner's retreat with luxury-filled bath and wonderful walk-in closet
- First floor guest suite with private bath and walk-in closet
- Very open well-appointed kitchen with large island flows into breakfast room and coffered ceiling family room that opens onto covered porch – great for entertaining!
- Large study with French doors
- Impressive dining room has adjacent barrel vaulted butler's pantry
- Convenient mudroom with cubbies
- Great laundry room has space for extra refrigerator or freezer
- Spacious bedrooms have WICs and adjoining baths
- Enjoy huge bonus room with custom built-ins
- Plenty of unfinished walk-in storage on 2nd floor plus huge walk-up 3rd floor unfinished attic

Price, Features, Specifications, Plans, and Elevation Subject to Change without Notice 06/23/17

www.bellavistaraleigh.com • 919.232.0498

Fonville Morisey Barefoot
New Home Sales & Marketing





**Legacy Custom Homes
Bella Vista Homesite #24**

The builder reserves the right to revise noted specifications or substitute features, architectural details or materials. Illustrations and floorplans are for discussion purposes only and not part of a legal contract. Room sizes are approximate. JUNE17