


ESTATES

1404 Sky Vista Way – Homesite 25
Raleigh Custom Homes
\$TBD



5,779 SF Finished

4 Bedrooms / 4 Full Baths / 3 Half Baths

First Floor Owners Retreat

Designer Kitchen with Sub-Zero Refrigerator/Freezer Columns

Large Prep Kitchen & Pantry

**Spacious Rear Porch with Phantom Screen, Infratech Heaters,
Fireplace, Built-in Grill**

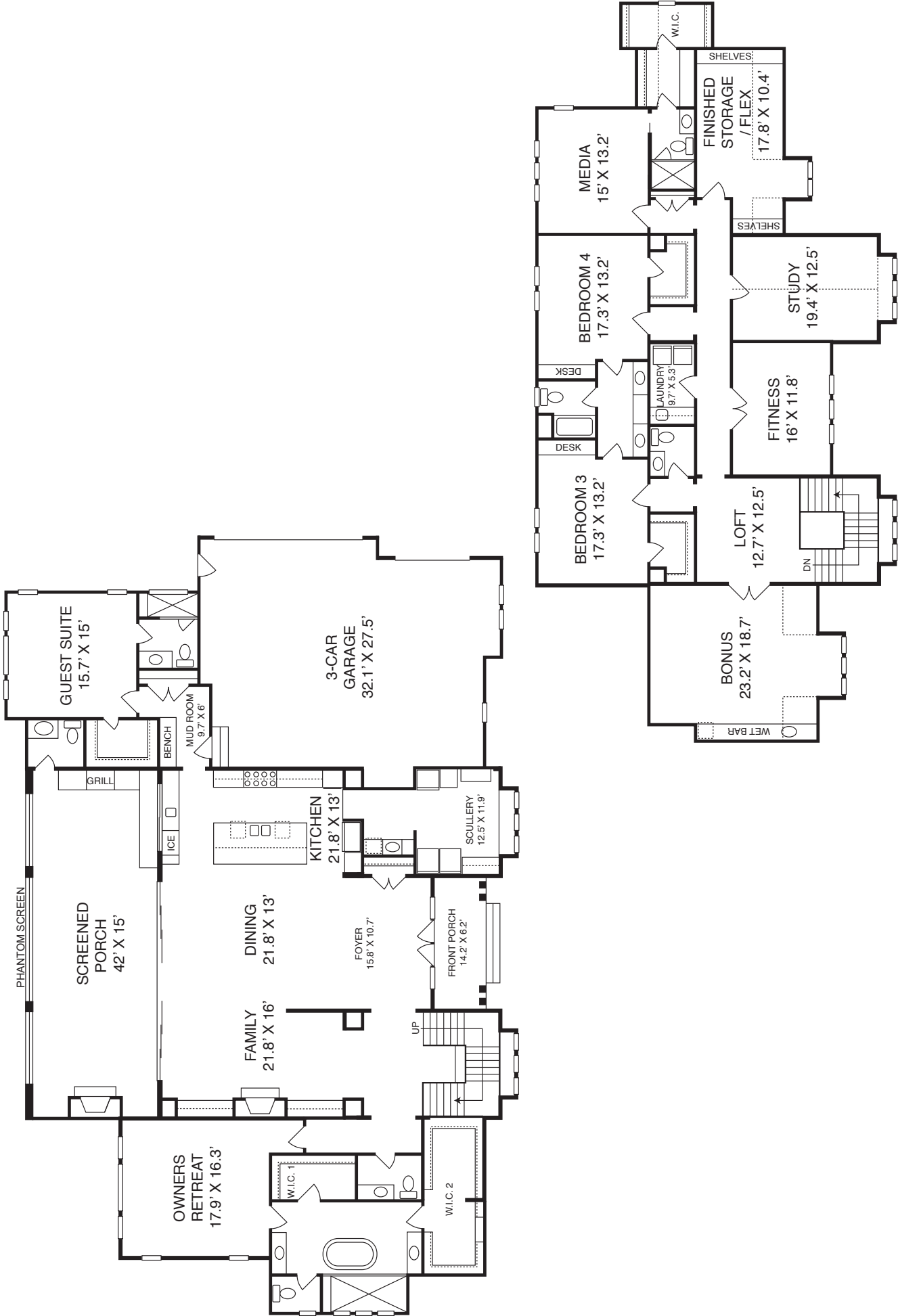
3 Car Garage

Exterior:

- Stunning modernist brick & siding home
- Abundant windows provide natural light
- Rear porch with Phantom screen, fireplace, Infratech heaters, and built-in Coyote grill – Guest half bath, too!
- Nestled on 1.03 Acre homesite

Interior

- Inviting covered entry has double glass doors with adjoining glass panels – all Privacy Smartglass!
- Impressive 2 story foyer opens to loft overlook
- Spacious first floor owners retreat with vaulted ceiling has 2 huge walk-in closets, spa inspired bath with relaxing soaking tub and large walk-in shower
- Private 1st floor guest suite with ensuite bath and walk-in closet
- Chef's dream kitchen has Sub-Zero refrigerator and freezer columns, abundant custom cabinets and large island
- Prep kitchen/scullery well equipped with Jenn Air appliances
- Hidden cabinet opens to pantry and scullery
- Spacious family room with fireplace and custom built-ins opens to dining area and kitchen, all flow out to the spacious screened porch through glass sliders – this is indoor/outdoor living at its best!
- Enjoy large bonus room with wet bar, fitness room, study, loft and 2 finished storage areas



Raleigh Custom Homes
Southern Hills Estates Homesite #25

The builder reserves the right to revise noted specifications or substitute features, architectural details or materials. Illustrations and floorplans are for discussion purposes only and not part of a legal contract. Room sizes are approximate. 8-14-23