

Laurel Ridge

THE ESTATES

SOPHISTICATION • PRIVACY • CONVENIENCE



Poythress Construction Company, Inc.

THE LAUREN

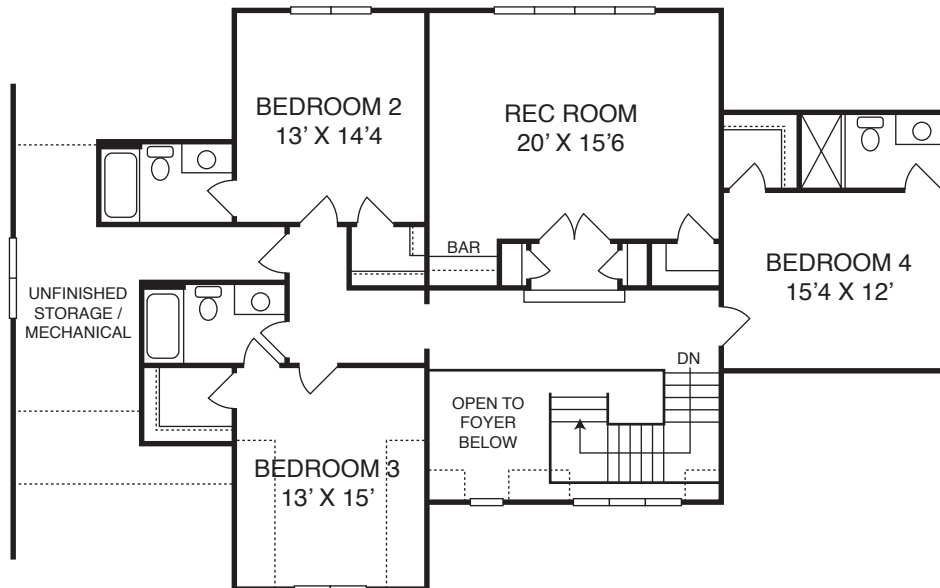
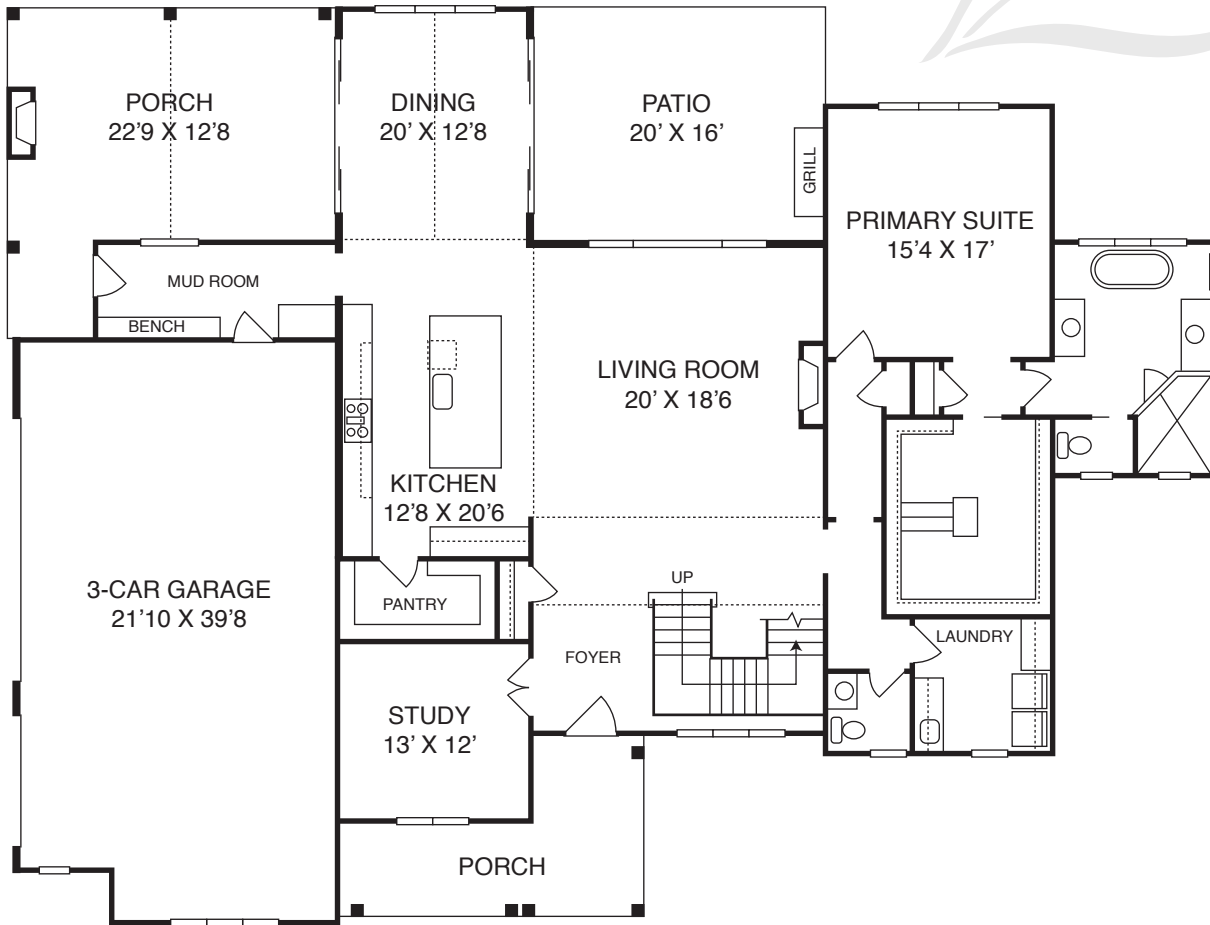
Homesite 44 // 300 Blufftonwood Drive • Pittsboro, NC

4 BDR // 4.5 BA // 3948 SF // 4.3 Acres

First Floor Primary Retreat // Study/Office Main Level

Screen Porch with Fireplace // 3 Car Garage

MLS# TBD // \$TBD



Poythress Construction Company, Inc

THE LAUREN